



**Roanoke-Chowan Community
College Associate Degree
Nursing Student Handbook of
Policies and Procedures**

An NCADN Conceptual Curriculum

Student Handbook

Approved by R-CCC Board of Trustees on January 29, 2013

In addition to the policies and schedules of Roanoke-Chowan Community College, nursing students follow the student guidelines of the Nursing Department. This Nursing Student Handbook supersedes all previous handbooks and provides the student with information about the college and the nursing program.

The policies presented in this edition of the Nursing Student Handbook are not a binding contract between Roanoke-Chowan Community College and students. The Nursing Department reserves the right to change any policies or schedules at any time.

The Roanoke-Chowan Community College Associate Degree Nursing Student Handbook of Policies and Procedures is a reference guide for students, faculty, and staff of Roanoke-Chowan Community College (R-CCC) and the Department of Nursing. It serves as a supplement to the R-CCC Catalog & Student Handbook. The content herein is subject to change with any revisions in laws, statutes or policies governing the College.

Revised: 5/2014, 2/27/2015, 4/2016, 5/2017, 4/2018, 6/2019, 4/2020, 7/2021, 8/2022, 6/2023, 6/2024

Table of Contents

<u>1.0 Associate Degree Nursing</u>	5
1.1 General Information	5
1.2 SACSCOC Accreditation Information	5
1.3 North Carolina Board of Nursing	6
<u>2.0 College Mission</u>	7
2.1 Introduction	7
2.2 Mission, Vision, and Values of Roanoke-Chowan CC	7
2.3 Purpose of the Associate Degree Nursing Program	8
<u>3.0 Organizational Structure</u>	8
<u>4.0 Associate Degree Nursing Mission</u>	9
4.1 Mission	9
4.2 The Associate Degree Nurse	9
4.3 Associate Degree Nursing Education	9
4.4 Conceptual Framework	10
4.5 Definitions	10
<u>5.0 Curriculum Outcomes</u>	11
<u>6.0 Curriculum</u>	12
<u>7.0 Clinical Facilities</u>	13
<u>8.0 Expenses</u>	14
<u>9.0 Admission</u>	14
9.1 Introduction	14
9.2 Eastern CCEP Credentialing Checklist	15
9.3 Admission Requirements	17
9.4 Early Acceptance	20
9.5 Advanced Placement LPN	21
9.6 Transfer Students	21
9.7 Readmission	22
<u>10.0 Progression</u>	23
10.1 Evaluation and Guidance	23
10.2 Academic Progression	24
10.3 Grading System	25
10.4 Retention Plan	25
10.5 Withdrawal	25
10.6 Good Academic Standing	25
<u>11.0 Attendance</u>	26
11.1 Class/Lab Attendance	26
11.2 Clinical Attendance	26
11.3 Clinical Tardiness	27
11.4 Clinical Attendance Probation	27
11.5 Illness During Clinical Attendance	27
11.6 Inclement Weather	27
<u>12.0 Evaluation</u>	27
12.1 Class/Lab Evaluation	27
12.2 Clinical/Lab Evaluation	27
12.3 Clinical Probation/Dismissal	28

R-CCC ADN STUDENT HANDBOOK 2024-2025

<u>13.0 Clinical Guidelines</u>	28
13.1 Essential Functions	28
13.2 Professional Guidelines	30
13.3 Student Appearance	31
13.4 Impaired Thinking	32
13.5 Student Health Reporting Policy	32
13.6 Infections Disease Policy	32
13.6.1 Universal Precautions	33
13.6.2 Bloodborne Disease	33
13.6.3 Infection Control Exposure Protocol	34
13.6.4 Reporting an Incident	34
13.7 TB Control Policies	34
13.7.1 TB Exposure	35
13.8 General Safety Guidelines	36
13.9 Unsafe Practices	36
<u>14.0 Graduation</u>	37
14.1 Student Responsibility	37
14.2 Graduation Requirements	37
14.3 General Information	37
<u>15.0 Legal and Ethical Standards</u>	37
15.1 Code of Ethics	37
15.2 Confidentiality	39
15.3 HIPAA	39
15.4 Clinical Requirements	40
15.5 Professional Licensing Examination	40
15.6 Licensure Eligibility	41
15.7 Certification/Licensure Opportunities	41
<u>16.0 Student Conduct</u>	41
16.1 Cheating	41
16.2 Plagiarism	42
16.3 Drug/Alcohol Use	42
16.4 Professional Activities	43
16.5 Laboratory Security	43
16.6 Electronic Recording Devices	43
16.7 Cell Phones and Other Electronic Devices	43
16.8 Social Networking and Media Policy	43
16.9 Receipt of Gift Policy	43
16.10 Professional Guidelines	44
<u>17.0 Student Insurance</u>	44
17.1 Medical Insurance	44
17.2 Malpractice Insurance	44
<u>18.0 Student Guidance</u>	45
18.1 Student Transportation and Housing	45
18.2 Student Employment	45
18.3 Student Health Services	45

R-CCC ADN STUDENT HANDBOOK 2024-2025

18.4 Reporting an Incident	45
18.5 Learning Resources	46
<u>19.0 Student Organizations</u>	46
19.1 Student Government Association	46
19.2 Department Organizations	46
<u>20.0 Student Appeal and Grievance</u>	46
20.1 Appeal Procedure	46
20.2 Student Grievance Procedure/Due Process	47
<u>21.0 Student Agreements</u>	48
21.1 Student Policy Agreement	48
21.2 Reference Agreement	48
21.3 Video Release Statement	48
21.4 ECU Health Confidentiality Agreement	49
21.5 ECU Health Appendix A: Certification by Student	50
21.6 ECU Health Training for Clinicals	51
21.7 Clinical Involvement Agreement/Controlled Substances	52
21.8 Associate Degree Nursing Program Confidentiality Agreement	53
21.9 Release of Personal Information	53
21.10 Associate Degree Nursing Program Performance Improvement Plan	54
<u>22.0 Checklist for Applying to the Nursing Program</u>	55
<u>23.0 References</u>	56

R-CCC ADN STUDENT HANDBOOK 2024-2025

1.0 ASSOCIATE DEGREE NURSING

1.1 General Information

In addition to the policies of Roanoke-Chowan Community College, nursing students follow the student policies of the Nursing Department. The Nursing Department administration and faculty developed these policies to establish professional attitudes and conduct in the student. Each student is responsible for being aware of and always abiding by the policies.

1.2 SACSCOC Accreditation Information

The Southern Association of Colleges and Schools Commission on Colleges (SACSCOC) accredits Roanoke-Chowan Community College to award associate degrees, diplomas, and certificates.

Questions about the accreditation of Roanoke-Chowan Community College may be directed in writing to the Southern Association of Colleges and Schools Commission on Colleges at 1866 Southern Lane, Decatur, GA 30033-4097, by calling 404-679-4500, or by using information available on [SACSCOC's website \(www.sacscoc.org\)](http://www.sacscoc.org).

Direct all inquiries regarding the programs and services of Roanoke-Chowan Community College to the college; for questions relating to the college's accreditation, contact the Commission on Colleges.



R-CCC ADN STUDENT HANDBOOK 2024-2025

1.3 North Carolina Board of Nursing

The North Carolina Board of Nursing (NCBON) approves the Associate Degree Nursing program.

MISSION:

Protect the public by regulating the practice of nursing.

VISION:

Exemplary nursing care for all.

VALUES:

- Professionalism
- Accountability
- Commitment
- Equity

DUTIES AND RESPONSIBILITIES:

In addition to issuing, renewing and reinstating nursing licenses for Registered Nurses and Licensed Practical Nurses, Board responsibilities include:

- Approving and monitoring the state's nursing education programs which lead to initial licensure throughout the state.
- Interpreting the practice of nursing in North Carolina based on the Nursing Practice Act.
- Investigating complaints against licensed nurses and taking appropriate actions when deemed necessary.
- Administering the Nurse Licensure Compact.
- Maintaining the Nurse Aide II Registry.
- Regulating the practice of Nurse Practitioners and Nurse Midwives.

NCBON

4516 Lake Boone Trail
Raleigh, NC 27607

Post Office Box 2129
Raleigh, NC 27602-2129

Phone: 919-782-3211
Fax: 919-781-9461



R-CCC ADN STUDENT HANDBOOK 2024-2025

2.0 COLLEGE MISSION

2.1 Introduction

Roanoke-Chowan Community College (R-CCC) Nursing Faculty has prepared this student handbook to inform the Associate Degree Nursing students about policies, procedures, and guidelines specific to the Associate Degree Nursing program. This manual serves as a supplement to the college catalog. Each student is responsible for reviewing and following the policies and procedures detailed in this manual.

2.2 Mission, Vision, and Values of Roanoke-Chowan Community College

MISSION:

Roanoke-Chowan Community College, a member of the North Carolina Community College System and located in Hertford County, is a public, two-year institution of higher education offering associate degrees, diplomas, certificates, college and career readiness, and customized business and industry training in a variety of delivery modes promoting public service, transfer, and workforce development for a diverse student body, leading them to contribute to the vitality of an increasingly global community.

VISION:

R-CCC will be a world-class educational institution positively changing the lives of those served.

VALUES:

R-CCC employees value student success, high quality instruction and service, innovation, access, social awareness, fairness, respect, accountability, equity, and community development.



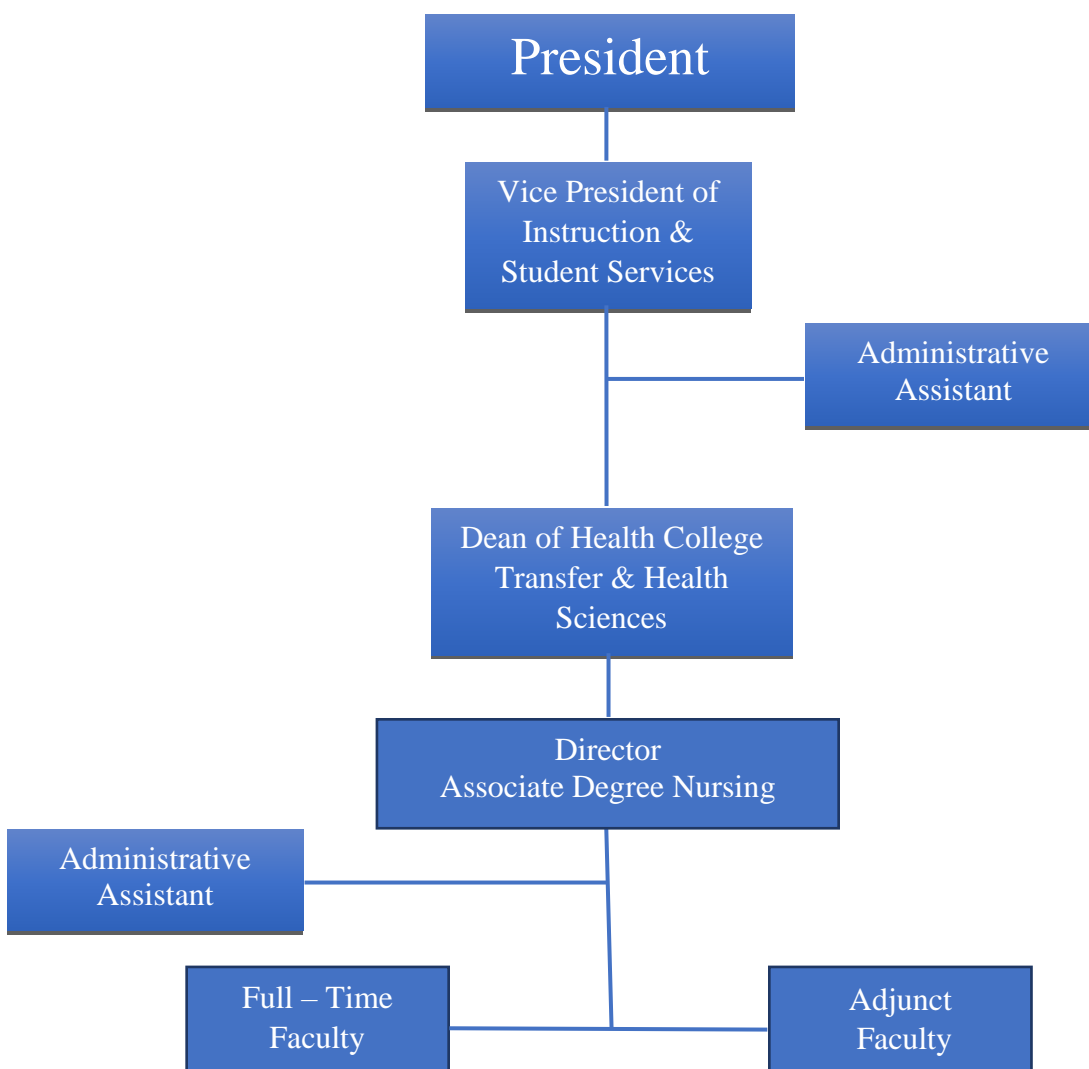
R-CCC ADN STUDENT HANDBOOK 2024-2025

2.3 Purpose of the Associate Degree Nursing Program

The Associate Degree Nursing Program accepts the purposes of the community college and sees its primary goal as creating an opportunity to prepare selected students to qualify as contributing members of the health care team:

- a. Graduates of the associate degree in nursing (RN level) will be well prepared for entry-level positions in a variety of health care settings.
- b. Most associate degree nursing program graduates will find employment in the Roanoke-Chowan and surrounding service areas.

3.0 ORGANIZATIONAL STRUCTURE



4.0 ASSOCIATE DEGREE NURSING MISSION

4.1 Mission

The Associate Degree Nursing (ADN) Program supports the mission of the North Carolina Community College System and the mission of Roanoke-Chowan Community College. The faculty is committed to providing accessible high quality nursing education to meet the diverse and changing healthcare needs of the service area and to promoting the development of qualified students prepared for the professional role of registered nurse at the entry level. Graduates of this program meet the education requirements to take the National Council Licensure Examination for Registered Nurses (NCLEX-RN). The philosophy of the Associate Degree Nursing Program derived from statements about the health, quality of life, achievement of potential, the individual, environment, health, nursing, the practice, and education of the Associate Degree Nurse. Within this mission, the goal of nursing faculty is to promote the highest quality of nursing care to the individual, families and significant persons, and the community. The aim is to facilitate optimum health, quality of life and achievement of potential for the individual.

4.2 The Associate Degree Nurse

The graduate of the ADN Program at Roanoke-Chowan Community College is prepared to meet the educational competencies defined by the National League for Nursing and the Nurse Practice Act of North Carolina. The practice of nursing is directed toward meeting the health care needs of individuals throughout their lifespan. The ADN prepared nurses' role is characterized by evidence-based clinical practice with the provision of care for individuals and families in structured settings. The ADN graduate demonstrates the competencies identified by the National League of Nursing (2020) and the Institute of Medicine (2016) to provide nursing care.

4.3 Associate Degree Nursing Education

Nursing education at the associate degree level, in the North Carolina Community College System, is a process that facilitates changes in behavior, the acquisition of knowledge, skills, and attitudes necessary to function in the role of the entry-level nurse. The curriculum is conceptually based and founded on principles of adult and collaborative learning.

The ADN program incorporates evidence-based nursing theory and practice, general education, and the sciences in an environment conducive to learning. The conceptual design defines the essential elements as the environment, quality of life, achievement of potential, and health. The organizing framework contains content related to the individual, the health care system and nursing.

The ADN Program at Roanoke-Chowan Community College provides an education that is flexible, progressive, and sensitive to the changing needs of the individual, significant support person(s), and community. Through these educational experiences, students will have the opportunity to develop critical thinking and critical thinking skills.

The ADN Curriculum is based on a variety of learning theories. Learning is a continuous process that results in a change of behavior and occurs when the individual is challenged and motivated to enhance personal knowledge. Teaching and learning are interactive processes between teacher and learner. The responsibility of the faculty of Roanoke-Chowan Community College Associate Degree Nursing Program is to facilitate the student's understanding and ability to meet the competencies for nursing practice through the design and evaluation of learning experiences. The nursing student is responsible for actively participating in learning experiences and developing the knowledge, skills, and attitudes necessary to provide quality individual centered nursing care.

R-CCC ADN STUDENT HANDBOOK 2024-2025

4.4 Conceptual Framework

The conceptual model provides a framework to prepare learners for new instruction and motivates them by making a meaningful connection for the learner. The learner must attain proficiency in each part of the framework; the individual, the healthcare system and nursing to understand the complete curriculum (Knowles, 2015). The domains of the individual, the healthcare system, and nursing provide the conceptual framework guiding the Associate Degree Nursing Curriculum. Concepts are organized within each of these domains and learning occurs from simple to complex.

4.5 Definitions:

Individual

The faculty of R-CCC believes that everyone is a complex, multidimensional, unique, and significant being possessing inherent value and worth, and a member of a family, community, and culturally diverse society. All individuals have dynamic bio-physical, psychological, socio-cultural, spiritual, and developmental needs that contribute to health, quality of life, and achievement of potential. Adapting to the environment requires the individual to change throughout the lifespan. Everyone has a right to healthcare and to information that will assist him or her to participate actively in his or her health care to achieve the highest level of wellness possible. All individuals should be cared for, respected, nurtured, understood, and assisted. To provide and manage care, nurses must view the individual at the center of any nursing activity.

Healthcare System

According to von Bertalanffy (1969), an older but relevant resource, a system consists of the coming together of parts; the power comes from the energy of the interconnection and the way the parts come together. The community healthcare system is a macrosystem and consists of a variety of parts or microsystems. Clinics, hospitals, pharmacies, laboratories, long-term care, and Internet sites are microsystems that are connected by patients and information to improve health (Institute of Medicine, 2016).

Nursing

Nursing is a science and the art of integrating and assimilating knowledge, and skills derived from biological, sociological, and behavioral sciences and information technology to deliver client-centered, culturally competent, holistic care. Through caring, empathy, ethics, and the development of a therapeutic relationship with the individual and significant support person(s), the nurse integrates the art of nursing with the scientific foundation for nursing practice that utilizes the nursing process. Incorporating documented best practice, the nurse functions autonomously and collaboratively with the interdisciplinary team to assist individuals to reach their maximum health potential through assurance of quality client outcomes, promotion of wellness, prevention of illness, and restoration of health or assistance in achieving a dignified death.

Environment

The individual is in constant interaction with a changing environment that consists of both internal and external forces that vary throughout the lifespan and has the potential to cause stress in the individual. The nurse can assist the individual to alter aspects of the environment and to utilize his/her innate and learned coping mechanisms to adapt to these stressors.

R-CCC ADN STUDENT HANDBOOK 2024-2025

Health

Health is a dynamic, ever-changing state of mental, physical, and spiritual well-being, which exists on a continuum from optimal wellness to illness and ending in death. The individual's needs for healthcare are determined by his/her position on the continuum. Everyone's health is based on his/her cultural perceptions and beliefs of health and illness and the ability to adapt to internal and external environmental forces. The individual is responsible for and capable of identifying, learning, and practicing health behaviors that can promote wellness, prevent illness, restore, or maintain wellness, or achieve a dignified death.

Quality of Life

Quality of life involves five domains including physical, functional, psychological, social, and spiritual well-being. The individual's perception of and satisfaction with activities of daily living contributes to their worth, meaning or satisfaction. This empowers the individual to cope successfully with the full range of challenges encountered in the real world (Ignatavicius, 2018).

Achievement of Potential

Achievement of potential is the individual's growth toward attaining one's ability and quality of life. It is based on the individual's choices, perceptions, personal goals, life experiences, and holistic health.

NLN Core Competencies

The NLN supports the twenty-one competencies for future practitioners from the Pew Health Commission which are: embrace a personal ethic of social responsibility and service; exhibit ethical behavior in all professional activities; provide evidence-based, clinically competent care; incorporate the multiple determinants of health in clinical care; apply knowledge of the new sciences; demonstrate critical thinking, reflection, and problem-solving skills; understand the role of primary care; rigorously practice preventative health care; integrate population-based care and services into practice; improve access to health care for those with unmet health needs; practice relationship-centered care with individuals and families; provide culturally sensitive care to a diverse society; partner with communities in health care decisions; use communication and information technology effectively and properly; work in interdisciplinary teams; ensure care that balances the individual, professional, system, and societal needs; practice leadership; take responsibility for quality of care and health outcomes at all levels; contribute to continuous improvement of the health care system; advocate for public policy that promotes and protects the health of the public; and, continue to learn and help others learn (National League of Nursing, 2020).

Institute of Medicine Competencies

The five core competencies identified by the IOM for healthcare providers are to provide patient-centered care, work in interdisciplinary teams, employ evidence-based practice, apply quality improvement, and utilize informatics (IOM, 2016).

5.0 CURRICULUM OUTCOMES

Program Outcomes

The ADN graduate will:

1. Practice professional nursing behaviors incorporating personal responsibility and accountability for continued competence,

R-CCC ADN STUDENT HANDBOOK 2024-2025

2. Communicate professionally and effectively with individuals, significant support person(s), and members of the interdisciplinary healthcare team,
3. Integrate knowledge of the holistic needs of the individual to provide an individual-centered assessment,
4. Incorporate informatics to formulate evidence-based clinical judgments and management decisions,
5. Implement caring interventions incorporating documented best practices for individuals in diverse settings,
6. Develop a teaching plan for individuals, and/or the nursing team, incorporating teaching and learning principles,
7. Collaborate with the interdisciplinary healthcare team to advocate for positive individual and organizational outcomes, and
8. Manage health care for the individual using cost effective nursing strategies, quality improvement processes, and current technologies.

*The program outcomes integrate into all nursing courses in the program: NUR 111, 112, 113, 114, 117, 211, 212, and 213.

6.0 CURRICULUM

The ADN curriculum provides knowledge, skills, and strategies to integrate safety and quality into nursing care, to practice in a dynamic environment, and to meet individual needs, which affect health, quality of life, and achievement of potential.

Course work includes and builds upon the domains of healthcare, nursing practice, and the holistic individual. Content emphasizes the nurse as a member of the interdisciplinary team providing safe, individualized care while employing evidence-based practice, quality improvement, and informatics. Graduates of this program are eligible to apply to take the National Council Licensure Examination (NCLEX-RN). Employment opportunities are vast within the global health care system and may include positions within acute, chronic, extended, industrial, and community health care facilities.

Corequisite Courses and Hour Requirements

		Class	Lab	Clinical	Credit Hours
BIO 168	Anatomy & Physiology I	3	3	0	4
PSY 150	Introductory Psychology	3	0	0	3
ENG 111	Writing and Inquiry	3	0	0	3
ACA 122	College Transfer	0	2	0	1
BIO 169	Anatomy & Physiology II	3	3	0	4
PSY 241	Developmental Psychology	3	0	0	3
HUM 115	Critical Thinking	3	0	0	3
CIS 110	Introduction to Computers	2	2	0	3
ENG 112	Writing/Research Disciplines, OR	3	0	0	3
ENG 114	Professional Research & Reporting	3	0	0	3

You must apply for and be formally admitted to the nursing program to take any NUR courses.

		Class	Lab	Clinical	Credit Hours
Fall I	NUR 111 Intro. to Health Concepts	4	6	6	8
Spring I	NUR 112 Health-Illness Concepts	3	0	6	5
	NUR 113 Family Health Concepts	3	0	6	5
	NUR 117 Pharmacology	1	3	0	2
Fall II	NUR 211 Health Care Concepts	3	0	6	5

R-CCC ADN STUDENT HANDBOOK 2024-2025

NUR 114 Holistic Health Concepts	3	0	6	5
NUR 212 Health Systems Concepts	3	0	6	5
Spring II NUR 213 Complex Health Care Concepts	4	3	15	10

TOTAL CREDITS FOR AAS DEGREE 72

7.0 CLINICAL FACILITIES

The ADN program has clinical education agreements with the following facilities:

Accordius Health and Rehab Gatesville, NC	Ahoskie Pediatrics Ahoskie, NC	Albemarle Regional Health Services Elizabeth City, NC
Berry Primary Gatesville, NC	Carolina Pediatrics Ahoskie, NC	ECU Health Bertie Windsor, NC
ECU Health Chowan Edenton, NC	ECU Health Roanoke-Chowan Ahoskie, NC	Hertford County Public Schools Hertford County, NC
Northampton Nursing and Rehab Jackson, NC	Roanoke-Chowan Community Health Ctr. Ahoskie, NC	Three Rivers Health & Rehab Ctr. Windsor, NC

Other sites include, but are not limited to, various physicians' offices, outpatient clinics, home health agencies, and geriatric facilities.

Students' clearance for clinical rotations at ALL clinical facilities to progress in the program is required. Verification is through a Criminal Background Check and Drug Screening.

Students and faculty will follow the policies and procedures set forth by each clinical facility during the time the students are performing clinical practice.

As stated in the clinical education agreements, a clinical facility has the right to refuse clinical practice experience for any student whose clinical performance is unsatisfactory or who is found to be in non-compliance with the personnel policies and procedures of the clinical facility. Students who are denied clinical privileges will be unable to complete clinical practice and will be dismissed from the program for failure to progress.

R-CCC ADN STUDENT HANDBOOK 2024-2025

8.0 EXPENSES*

Students should prepare for the following expenses while enrolled in the program:

- Tuition and Fees
- Malpractice Insurance
- Criminal Background Check
- Drug Screening
- Rotation Manager
- Textbooks/Resources
- Online nursing resources
- Watch with a second hand
- Clinical Uniforms/Shoes
- Clinical/Laboratory Supplies
- Clinical Travel
- Physical Examination including immunizations/titers
- Annual TB Test (Per [CDC Testing & Diagnosis TB Guidelines](#))
- CPR
- CNA I Registry
- Pinning Ceremony (varies from year to year)

*This list is not all-inclusive.

9.0 ADMISSION

9.1 Introduction

The Associate Degree Nursing curriculum prepares individuals with the knowledge and skills necessary to provide nursing care to clients and groups of clients throughout the lifespan in a variety of settings.

Courses will include content related to the nurse's role as provider of nursing care, as manager of care, as member of the discipline of nursing, and as a member of the interdisciplinary team.

Graduates of the Associate Degree Nursing program are eligible to apply to take the National Council Licensure Examination for Registered Nurses (NCLEX-RN) which is required for practice as a Registered Nurse (RN). Employment opportunities include hospitals, long-term care facilities, clinics, physician's offices, industry, and community agencies.

Approved by the NCBON, the ADN program admits first time nursing students in the fall semester only. A maximum of sixty students may be enrolled in the program, which includes the first and second level. To be considered for admission to the program, applicants must meet the admission requirements established by the College. Applicants must also meet those admission requirements established by the ADN program. ADN admission/selection is a competitive process, which is outlined in this document.

Individuals who are interested in the Nursing Program or currently enrolled in pre-nursing courses are strongly encouraged to attend one information session detailing the admissions process. Sessions are held during the fall and spring. Attendance at one of these sessions is mandatory to be considered for admission to the program. The nursing faculty will advise each potential applicant about the course

R-CCC ADN STUDENT HANDBOOK 2024-2025

requirements for nursing and related courses for earning an associate degree in nursing and the role of the Registrar in determining what credits are awarded on transfer course work.

The admission/selection process for the ADN program is composed of three steps. Each step must be completed in sequence. Applications are accepted from interested individuals beginning in November of the year prior to which the person wishes to enter the Nursing Program. Associate degree nursing program applications are available online at [Roanoke-Chowan Community College's website](#), as well as the Associate Degree Nursing Student Handbook of Policies and Procedures, Medical Form, Tracking Sheet, and link to Eastern RIBN (partnership with East Carolina University College of Nursing).

Applications do not carry over from year to year. A new application must be completed, and the admission process followed beginning in November of the year prior to which those individual desires admission into the Nursing Program.

9.2 Eastern CCEP Credentialing Checklist

The elements as specified here on the *Eastern CCEP Clinical Passport* document serve as the minimum requirements for student participation in the clinical setting of the participating agencies. The list represents the highest standards as evaluated by the Eastern CCEP Committee. Note that clinical agency contracts may specify additional requirements based on the areas in which students may be placed or regulations established by that agency or health system. Requirements are subject to change.

<https://www.cdc.gov/vaccines/schedules/index.html>

Universal Credentialing Requirements (for the PASSPORT)

AHA BLS Provider – CPR Training	Approved course is American Heart Association Basic Life Support Provider course.
Professional Liability Insurance	Per agency contractual agreement requirement (Minimum of \$1 million per incident and \$3 million aggregate)
Background Check <ul style="list-style-type: none"> ▪ Social Security Number Trace ▪ NC Statewide Criminal Record Search (7 years) ▪ County Court Criminal Conviction Search (7 years if resided outside of NC) ▪ National Sex Offender Database Search ▪ Office of Inspector General (OIG) ▪ Office of Foreign Assets Control (OFAC) ▪ General Services Administration (GSA) <p><i>Note: The assigned agency does not arrange nor cover the cost of this screening.</i></p>	Once per program Admission and Progression Repeat for: <ul style="list-style-type: none"> ➤ Per agency contractual agreement requirement ➤ Readmission ➤ Transfer from one school or from one program to another with same school ➤ Students must notify school if there has been a change in status including charges or convictions within 5 days per academic policy
Drug Screen (urine) Once per program admission and progression and/or with cause. Must repeat for readmission of program transfer. <p><i>Note: UNC Hospitals require an *expanded drug screen (see clinical agreements/ contracts for requirements).</i></p>	Amphetamine, Methamphetamine, Barbiturates, Benzodiazepines, THC, Cocaine, Opiates, Methadone, Oxycodone, Propoxyphene, PCP, MDMA (Ecstasy), *Fentanyl, Methaqualone, Phencyclidine, Marijuana Metabolite, Extended Opiates are defined as codeine, hydrocodone, hydromorphone, morphine, oxycodone, and oxymorphone.
REQUIRED IMMUNIZATIONS:	CURRENT CDC RECOMMENDATIONS
Type:	Requirement:
✓ Measles	✓ 2 doses or positive titer

R-CCC ADN STUDENT HANDBOOK 2024-2025

<ul style="list-style-type: none"> ✓ Mumps ✓ Rubella ✓ Varicella ✓ Tetanus/Diphtheria/Pertussis (Tdap) 	<ul style="list-style-type: none"> ✓ 2 doses or positive titer ✓ 2 doses or positive titer ✓ 2 doses or positive titer ✓ 1 dose Tdap, Td Booster every 10 yrs.
Hepatitis B (HBV) Series	Energix-B or Recombivax-B, (3 doses or positive titer) if incomplete series, then Heplisav – B, (2 doses 4 weeks apart) <i>Note: For declination or waiver, a copy must be on file at the school and/or be approved by the facility or agency.</i>
COVID-19	Follow academic program policies and the clinical agency requirements.
Influenza	Annual – Fall See Academic/Agency Guidelines.
Tuberculosis Screening Preplacement Baseline Individual TB Risk Assessment including TB Symptom evaluation, and either a 2-step TB skin test (given 1-3 weeks apart) or a TB blood test within 12 months of program admission or readmission. If a student has had a positive TB skin test in the past, such as due to TB exposure/infection or receiving the BCG vaccine, documentation of a chest x-ray for the + test will be required along with the Baseline Individual T Risk Assessment and TB symptom evaluation. Students are no longer required to get an annual TB skin test unless there is a known exposure or ongoing transmission at a healthcare facility. Students will receive annual TB education via the Core Orientation.	Baseline Individual TB Risk Assessment Baseline TB Symptom Assessment 2-step TB skin test (given 1-3 weeks apart) OR TB Blood Test within 12 months of program admission or readmission Documentation of a chest x-ray is required for a past + PPD or blood test, additional evaluation for a TB disease will be required as deemed necessary from a healthcare provider. Annual TB education and risk assessment

Must complete the Core Orientation and Agency Specific Requirements in addition to the requirements listed here.

Official documentation of all requirements must be kept by the school program or by the vendor contracted for electronic documentation.

ECU Health Addendum: Tuberculosis Screening

Upon Admission, Readmission or Program Transfer

Baseline TB Risk Assessment and Symptom Screen **AND**

ONE OF THE FOLLOWING (a or b) within 90 days of the program start date**

- a. Two Step TST *Tests results documented in mm induration.
(If a student has documentation of a TST (1 or 2 step) within 12 months, but more than 90 days, before the program start date, students must have a one-step TST done), **OR**
- b. TB IGRA Blood Test

Past positive (+) TST (or blood test): must have documentation of negative CXR from date of +TST test; symptom screening to be performed annually by healthcare provider.

Upon Renewal (Annually)

- Annual TB education (Core Orientation)
- Symptom and risk assessment – If positive – follow up

****Program Start Date** refers to the start date of the semester in which the student begins matriculation in the specific health care program curriculum, not admission to the academic institution.

R-CCC ADN STUDENT HANDBOOK 2024-2025

9.3 Admission Requirements (Initial, Transfer, & Readmission if applicable)

Application Dates:	November 1 - March 1
Early Acceptance:	September 15 – January 15
Start Date:	Fall Semester (August)
Length of Program:	Four Semesters

STEP I: Completion of Minimum Requirements

1. Complete an Application for Admission to Roanoke-Chowan Community College (R-CCC online by visiting the R-CCC website. Request and submit official transcripts from high school or Adult High School Diploma/GED certificate and all colleges/universities attended to Student Services, Roanoke-Chowan Community College. Transcripts can be submitted via postal mail (PO Box 1248, Ahoskie, NC 27910) or third party such as Parchment, National Student Clearinghouse, etc. Applicants with a high school diploma equivalency certificate (GED) must submit a copy of the test scores in lieu of a transcript. *Applicants with a bachelor's degree are not required to submit high school transcripts.* Grades less than "C" on related curriculum sequence coursework or less than "B" on nursing course work will not be transferred.

Take the Reinforced Instruction for Student Excellence (RISE) test for proper course placement.

The student's high school GPA may be used to determine proper placement. Applicants who have taken the Scholastic Aptitude Test (SAT) or American College Testing (ACT) may be exempt from testing. Call Student Services at 252-862-1200 to schedule an appointment for testing.

2. Students must meet the following proficiency levels:
 - ✓ English ENG 002 Tier 2
 - ✓ Math MAT 003 Tier 2
3. GPA (Grade point average requirement): Applicant must have a minimum grade point average (GPA) of 3.0 or higher* on the most recent three (3) academic semesters (minimum of twelve college credit hours) of coursework. The GPA calculations will omit grades from transitional/supplemental courses, ACA courses, and PE courses.

*Students with a GPA between 2.8 – 2.99 can opt to sit for the Kaplan Nursing Entrance Exam with a separate scoring requirement based on scale listed in "STEP II: Competitive Criteria for ADN Admission/Selection," Criterion 2.

4. Applicants may complete the ADN Program Application and submit via:
 - Postal mail, postmarked on or before March 1. Mail to *ATTN: Jenny Johnson, Nursing Department, Roanoke-Chowan Community College, PO BOX 1248 Ahoskie, NC 27910.* Applications are available on the college's website at [Nursing ADN](#).
 - Applicants may also hand-deliver applications to Mrs. Jennifer Johnson, or place application in the ADN Drop Box, both located at Freeland 127.
5. Applicant must be listed as a Certified Nurse Aide with the NC Division of Health Service Regulation Registry by July 31. *This must remain active throughout the duration the student is enrolled in the ADN Program.*
6. Applicant must submit evidence of cardiopulmonary resuscitation certification (CPR) at the

R-CCC ADN STUDENT HANDBOOK 2024-2025

BLS/Health Care Provider Level from the American Heart Association by July 31. This must remain active throughout the duration the student is enrolled in the ADN Program.

7. Applicant must complete the health form. Submit a completed North Carolina Community College System (NCCCS) Health Examination Form, available online at [Nursing ADN](#) verifying physical and emotional health as evidence of the applicant's ability to provide safe nursing care to the public (21 NCAC 36.0320). This examination includes a 2-Step TB skin test (chest x-ray if positive TB skin test), Chicken Pox titer (or vaccine), Hepatitis B series (or declination*), Influenza (flu) and complete immunization records. A physician, nurse practitioner, or physician assistant may complete the health exam. The health exam must be current within 9 months of enrollment in a "NUR" course and be submitted at the time the application is made to the program, no extensions will be granted. **Applicant may sign a declaration form for waiver of Hepatitis B immunization after consultation with the Program Director. Clinical facilities have the right to deny students who do not meet their requirements. If the Health Examination Form and all other required documents are not submitted, the applicant will forfeit his/her admission into the Nursing Program.*
8. Applicants will receive a telephone call and/or conditional letter, either through mail or email, with permission to take Kaplan Entrance Exam *after* confirmation of the qualifying GPA by the Registrar's Office as well as receipt of all required components of the application packet. Applicants will schedule an appointment to take the Kaplan Test through the Nursing Department. *Kaplan test scores will be valid for a period of one year.* The scores achieved on this test will be used in the admission selection process for the ADN Program. Applicants will be allowed to *retest one time* during the admissions process for admission into fall semester. If two test scores are obtained (See Step I, part 3), they will be averaged based on the 0.75* (First Attempt) + 0.25*(Second Attempt).
9. Applicants seeking admission must complete ALL the above minimum admission requirements. A complete initial packet includes the Nursing Program Application and Health Form. Your application will be removed if all this information is not completed and included at the time of submission. Completion of the minimum admission requirements does not guarantee acceptance into the nursing program.
10. Additional requirements such as vaccinations, CPR, and CNA will be required by July 31 but are not a requirement to apply and be accepted into the program.

STEP II: Competitive Criteria for ADN Admission/Selection

After the applicant has completed the admission requirements outlined in Step I, each applicant will be evaluated utilizing the following criteria.

Assessment Criteria	Maximum Points	
Criterion 1	Completed course work and GPA	18 points
Criterion 2	Kaplan Entrance Exam Score	50 points
Criterion 3	Related Experience	6 points

R-CCC ADN STUDENT HANDBOOK 2024-2025

The points an applicant receives from each of these criteria will be added together. The applicants who receive the highest number of points will be offered admission to the program. After the criteria have been applied, the Kaplan Critical Thinking score will be utilized to determine priority for admission in circumstances where applicants have achieved the same score.

Criterion 1: Completed Course Work (18 points)

Classes (Credits)	Grade	Points
BIO 168 (4)		
BIO 169 (4)		

Point System A = 4, B = 3, C = 2

Completed Coursework up to 8 points

Grade-Point Average \geq 3.5 10 points

Criterion 2: Kaplan's Entrance Test (50 points possible, two attempts averaged) See above.

Overall score of 65 or more 50 points

Overall score of 55 – 64 25 points

Overall score of 54 or less 0 points*

** A minimum Competitive Criteria score of 25 points is required to be considered for admission. However, this does not guarantee acceptance into the program.*

For a GPA between 2.8 and 2.99 (based on 4.0 scale), Kaplan tests will be given with the following requirements:

GPA (4.0 scale)	Required Kaplan Score	25 points
	[0.75* (first attempt) + 0.25* (second attempt)]	
	50 points	
2.99	55 - 64	65+
2.98 – 2.95	56 - 65	66+
2.94 – 2.90	57 – 66	67+
2.89 – 2.86	58 – 67	68+
2.85 – 2.82	59 – 68	69+
2.80 – 2.81	60 – 69	70+

Criterion 3: Related Experience (6 points possible)

Current CNA II 4 points

Other * 2 points

**Students will be awarded two (2) points total for an allied health degree/certification/licensure from the following list: LPN, X-ray tech, surgical tech, medication aide, dialysis tech, phlebotomy, respiratory therapy, medical office, medical assisting, EMT, paramedic, PT assistant, occupational therapy, recreational therapy, pharmacy tech. Other degrees/certificates/licensure will not be considered for ranking purposes.*

R-CCC ADN STUDENT HANDBOOK 2024-2025

STEP III: Determination of Enrollment Status

Letter of Acceptance: Applicants who are selected to enter the nursing program will receive a letter of acceptance into. The applicant will be assigned one of the following enrollment categories:

1. Accepted for enrollment,
2. Alternate (Qualified but placed on a waiting list), or
3. Not accepted (Those who do not qualify).

Letter of Acknowledgment: Each student who receives a letter of acceptance will also receive an Acknowledgement Form. The Acknowledgement Form must be signed and returned to the Nursing Department to confirm the applicant's intent to enroll in any NUR course in the fall semester.

NOTES:

1. Any applicant not admitted into the program in a particular year would need to reapply for entry into the ADN Program the next year. Students must then adhere to the admission policies that are current for that year.
2. It is mandatory for applicants to inform Student Services of any changes in their personal information occurring from the date of application for corrections to be made on the selection data sheet (phone number, address, etc.) The College will not be responsible for any letters not delivered because of incorrect mailing addresses.
3. If the applicant's overall college GPA falls below 2.8, the applicant will forfeit admission to the nursing program.
4. The nursing faculty recommends that all students enrolled in nursing carry private health insurance coverage.
5. The admission procedure for the ADN Program is revised annually. Applicants are advised to go to the college website at [Nursing ADN](#) to read the current admission procedures.
6. Any applicant whose behavior is inconsistent with the North Carolina Nurse Practice Act (NC NPA) during the admissions process may forfeit their right to be admitted into the ADN Program. You may find the NC NPA at [NC Nurse Practice Act](#).
7. Applicants are strongly encouraged to complete related curriculum sequence courses required in the nursing curriculum prior to entering the ADN Program. The related courses for the ADN program (A45110) sequence are:

Fall I:	BIO 158, PSY 150, ENG 111, and ACA 122
Spring I:	BIO 169 and PSY 241
Fall II:	CIS 110
Spring II:	HUM 115 and ENG 112 or 114
8. Criminal Background Check and Drug Screening: The ADN Program requires a clinical component and a criminal background check with a drug screening is required by most clinical agencies. A student's criminal record will affect the student's opportunity for successfully completing the clinical portion of the course and therefore will limit the student's ability to progress in the program. If a student is unable to attend any clinical site, due to the criminal background check and/or drug screening, the student will be dismissed from the program.

9.4 Early Acceptance

For students meeting certain criteria, Early Acceptance may be offered through a separate admissions process.

R-CCC ADN STUDENT HANDBOOK 2024-2025

Initial criteria for Early Acceptance:

- GPA of 3.5 or higher
- Majority of corequisites completed
- Application turned in on time, neatly completed, with no corrections needed or errors noted

Applications will be processed once per month from September 15 through January 15. If the three above-listed criteria are met, the student will be offered a chance to take the Kaplan Entrance Exam. A score of 65 or above will result in an offer for early acceptance into the program. There are limited seats in this process, and the offers will be made in the order of receipt of applications and completion of the Kaplan Entrance Exam.

9.5 Advanced Placement LPN

Enrollment is contingent upon meeting the R-CCC ADN Program Admissions criteria, space availability, and the following criteria:

- Receipt of transcript from the Practical Nursing Program showing courses taken and grades earned
- Current unrestricted license to practice in North Carolina
- Completion of or transfer for coursework required in curriculum sequence prior to point of entrance into NUR courses. A score of 80 (B) or better is required in all nursing courses; a score of 70 (C) or better is required in all related coursework.
- Satisfactory completion with a grade of 80 or better on a theory/written exam and demonstration of skills proficiency. These evaluations will be administered by nursing faculty at a scheduled time, set during the acceptance process.

Acceptance into the program and satisfactory completion of the skills and written component of the evaluation will allow the LPN to begin the program in second semester, omitting NUR 111 in the first semester.

9.6 Transfer Students

Applicants desiring to transfer into R-CCC's ADN program must meet the same admission criteria required of all nursing students. The applicant must follow the same procedure required by R-CCC for all transfer students as outlined in the R-CCC catalog. A transfer student is defined as a student who has completed all requirements for progression to the next semester at the college from which they are transferring. Admission for the transfer student is on a "space-available" basis, not to exceed 10% of total program enrollment. Twenty-five percent of credit hours are required for completion at this college for the degree to be conferred.

In addition to the catalog requirements, the student may be requested to provide course outlines for all nursing courses for which the applicant is seeking credit, scores from any standardized test(s) like the Kaplan Entrance Test, taken at former schools, and a letter of recommendation from clinical instructor who most recently supervised applicant. The ADN Program Director along with the Registrar will determine the amount of credit to be awarded. Applicant must complete or receive transfer credit for coursework required in curriculum sequence prior to point of entrance into 'NUR' course with a grade of "C" or above in related coursework and an "80" (B) or better in 'NUR' courses.

Due to the rapidly changing technology in nursing studies, any student seeking transfer to the ADN program after more than one-year lapse in nursing education will be asked to demonstrate proficiency in core nursing competencies by means of theory (written exam) and clinical (skills) performance

R-CCC ADN STUDENT HANDBOOK 2024-2025

evaluations with a score of “80” (B) or better. The nursing faculty will administer the proficiency exam at a scheduled time, to be announced during the application process.

All applicants seeking advanced placement as a transfer student for the fall semester must complete ALL the above admission requirements on or before March 1. Applicants seeking advanced placement as a transfer student for the spring semester must complete ALL the above admission requirements on or before November 1. Completion of the minimum admission requirements for transfer does not guarantee acceptance into the program. Following completion of the minimum admission requirements for a transfer student, the competitive selection process will be implemented for admission to the ADN program. Refer to section 9.3 for the checklist for admission to the ADN Program.

9.7 Readmission

Students who have interrupted their studies in the ADN program and who wish to continue their academic pursuits are eligible for readmission on a “space available” basis, not to exceed 10% of total program enrollment. ALL current minimum admission requirements must be met. If a student is not successful in NUR 111, he/she will need to adhere to the admission guidelines referenced in section 9.3 Admission Requirements.

READMISSION TO THE ADN PROGRAM

Effective May 1, 2016

1. Any student who withdraws or is dismissed from the ADN program may be readmitted only once based on program faculty recommendations and available space.
2. A student who wishes to re-enter the ADN program must submit a written request to the Director. This request for reentry must be received by the end of the next semester following the interruption of studies. The letter must state what interventions have been implemented for success in the program. There is no guarantee of readmission to the ADN program.
3. Students who return after an absence of one semester or more (except summer) (a) must meet current admissions requirements (section 9.3 Admission Requirements), and (b) submit an updated health evaluation.
4. Students submitting for readmissions must complete and score an 80% or higher on a comprehensive theory evaluation which will include content covered in the previous NUR courses where the student met proficiency. This evaluation will be administered by nursing faculty/staff at a scheduled time, to be announced during the readmission process. Achievement of 80% on the comprehensive theory evaluation does not guarantee acceptance.
5. To assure retention of knowledge and skills, students are urged to return to the program at the earliest feasible time. The amount of time which has lapsed between withdrawal from the program and the readmission request must be considered by the program faculty. Nursing faculty may make educational (classroom and clinical) recommendations for any student seeking readmission. Auditing of the previously completed program courses may be recommended by faculty.

Any student who after readmission does not receive a grade of “B” (80%) or better on all curriculum courses will not be eligible to re-enroll in the ADN program.

The applicant who has exited the program one time for any reason, since implementation of the Concept-Based Curriculum in fall 2010, will be eligible for only one readmission. Any applicant not enrolled in the nursing program within two years from the time of their withdrawal/dismissal will have to repeat all nursing courses.

R-CCC ADN STUDENT HANDBOOK 2024-2025

Students called to active-duty military service while enrolled in the Nursing program will be readmitted with the same academic status that he or she had when last attended.

STEP I: Determination of Enrollment Status

Readmission Response Form: Applicants who are selected to enter the Nursing Program will receive a readmission response form into the nursing program.

Roanoke Chowan Community College ADN Program Readmission Response Form

Return this form via the enclosed envelope by ____/____/____.

Name: _____

Date of Birth: ____/____/____.

Circle one: Accept or Decline

I have met with financial aid (FA) and understand the implications of my FA status regarding readmission, even though I may or may not be eligible for FA.

Reason for Declining:

Student Signature: _____

Date: ____/____/____.

FA Specialist Signature: _____

Date: ____/____/____.

(Required if accepting readmission status)

Criminal Background Check and Drug Screening

The ADN Program requires a clinical component and a criminal background check with a drug screening is required by most clinical agencies. A student's criminal record will impact the student's opportunity to successfully complete the clinical portion of the course and therefore will limit the student's ability to progress in the program. If a student is unable to attend any clinical site, due to the criminal background check and/or drug screening, the student will be dismissed from the program.

10.0 Progression

10.1 Evaluation and Guidance

Evaluation begins prior to admission when the application to enter college, the admission test scores, and the high school and college transcripts of the applicant are reviewed by the admissions committee.

A planned program for regular evaluation of each student's progress is instituted at the beginning of the academic year. Students are required to participate actively in the process of evaluation. Specific evaluation processes are outlined in each course syllabus. Provision for student guidance is made in academic advising. A faculty advisor is designated for each student upon entrance to the program. Office hours of the nursing faculty will be posted each semester on their office doors. Appointments may be scheduled within these office hours. Students are encouraged to meet with their advisors soon after admission and then on a regular basis for academic advising. Counseling is available through TRIO Student Support Services.

R-CCC ADN STUDENT HANDBOOK 2024-2025

10.2 Academic Progression

Academic progression in nursing includes successful completion of the course or didactic requirements and demonstrated competence on all assigned nursing laboratory and clinical requirements. A nursing course is comprised of three components of study, the classroom, clinical and laboratory experiences as indicated in the course syllabus.

Students progressing in the ADN Program must:

1. **Class:** Receive a grade of "B" (80) or above in each nursing course and "C" (70) or better in pre-requisite, and co-requisite course regardless of the semester enrolled as stipulated by the corresponding grading scale. Should a student make a grade below "B" (80) in nursing or below "C" (70) in nursing-related sequence course(s), he/she will be dismissed from the nursing program. Fractions of a point at a level of 0.5 or greater will not be rounded up to the next whole number. (Ex.79.5 does not round to 80, it remains at 79).

Course prerequisites for NUR prefix courses as well as other course requirements are defined in the curricular section of the college catalog and the ADN Policy Manual. Students must successfully complete these prerequisites prior to enrolling in subsequent course offerings. Enrolled students must take NUR courses in sequence.

2. **Lab and clinical:** Satisfactorily complete and meet all laboratory, clinical practice and/or program objectives and requirements. (This includes clinical performance evaluations, competence verifications, skills checkoffs, clinical papers, care plans, concept maps, NCLEX preparation, online assignments and other course work as assigned). Students will be allowed two attempts to successfully return various skills in the lab. The second attempt at skills return will not be allowed until the student documents practice with a classmate who has successfully completed the return. After two unsuccessful skills checkoffs the student will be dismissed from the nursing program.
3. **Online resources:** Students will be required, as part of the course requirements, to utilize these resources each semester (Examples: ATI, Kaplan, Nurse Tim). Inability to master this content will result in a student being placed on a Performance Improvement Plan (PIP).
4. **Prepare for class.** Using the "Flipped Class" methodology, the students' preparation will be measured and evaluated during each class session. The primary purpose of flipping the classroom is to promote active learning, engagement, and content retention.
5. **Participate in active learning:** Students are expected to read, complete assignments, view lectures, listen to podcasts, and review prepared interactive media etc. prior to class. The student may also be directed to participate in online peer to peer or peer to faculty discussion forums. The student or student groups may be randomly assigned and/or selected to actively flip and jump start a class session. If assigned, the student or student group is expected to lead the class in a discussion, presentation, EBP literature review etc. about the topic.
6. **Meet overall course and program outcomes:** The student must demonstrate attainment and/or proficiency in **ALL** courses and/or program objectives and student learning outcomes to successfully complete the course.
7. **Pass the math proficiency exam:** Each student will be required to demonstrate Math Proficiency by scoring a minimum of "90" on math proficiency tests for NUR 111 and NUR 213. Three attempts are allowed in NUR 111 and two attempts in NUR 213. Inability to master this content

R-CCC ADN STUDENT HANDBOOK 2024-2025

with a score of "90" will result in a grade of "C" for the NUR course in which the student is enrolled. The student will be required to exit the program at that point.

The curriculum is designed so that each semester's requirements must be met before proceeding into the next semester. A student receiving an incomplete in a prerequisite course will be allowed only until the end of the add period of the following semester to remove the incomplete. If this is not done, the student will automatically be dropped from the course(s) including NUR courses in which he/she is currently enrolled.

If physical or mental impairments exist or arise which may interfere with the performance of classroom, laboratory, and/or clinical activities, the student will be referred to a physician. A letter of treatment or medical clearance will be required before the student may progress further in the program. The student, program faculty, and R-CCC Disabilities Services staff will jointly decide upon an individual plan of progression, including any applicable reasonable accommodations. Physical and/or mental impairments that do not respond to treatment within a reasonable period or reasonable accommodations may result in dismissal from the program. At any time, a faculty member may remove a student from clinical practice if the student demonstrates any behavior, which conflicts with safe patient care. Please refer to the Essential Functions (Section 13. 1) to determine the skills and abilities necessary to function as a nursing student.

10.3 Grading System

Refer to individual course syllabus for grading and testing policies.

10.4 Retention Plan

- Early Alert Program
- Mandatory remediation for test scores less than 80%.

10.5 Withdrawal

Students who withdraw or drop courses from the college before the 60% point of the term must submit the appropriate form to the Registrar's Office. Students receiving financial aid are held responsible for repayment of aid. **If beyond the 60% drop date, student will receive a grade of (C).**

All other withdrawals after the 60% point will be deemed as a grade of "WP" or "WF". In the event a student must withdraw beyond the 60 percent point because of extraordinary circumstances beyond the student's control, the student may petition the Dean of Student Development Services for a "W". Once a grade has been recorded, petitions will only be considered during the semester immediately after the grade was posted. The final decision will be submitted from the Vice President of Instruction and Student Services' Office. Students officially registered for courses may not withdraw merely by non-attendance. No drops for any reason will be approved two weeks prior to the end of the semester. (See current R-CCC catalog.)

Nursing: Students are expected to attend all classes, labs, and clinical assignments on time. Students who are absent more than eight percent (8%) of instructional course hours in a semester will be dismissed from the program. Clinical absences will not be accepted. Any missed clinical will have to be made up hour by hour within one week of absence.

10.6 Good Academic Standing

Good academic standing is defined as a student who is currently enrolled in the Nursing program, passing curriculum related courses with a "C" or better and nursing courses with an "80" (B) or better, and not on academic or clinical probation or suspension.

11.0 Attendance

11.1 Class/Lab Attendance

Students are required to attend class, lab, and clinical in each nursing course and remain for the entire session. Attendance will be monitored at any time during the class period. Students will be unofficially dropped when their absences reach eight percent (8%) of the total course hours. (Refer to Course Syllabus for total course hours.)

Tardiness is a disturbance to your fellow classmates and faculty. Therefore, students will be allowed to enter class/lab only at the designated break times. Each occasion of tardiness (class or lab) will equal one hour's absence and will be applied to the 8% rule for contact hours of a course. Students are not expected to notify their instructor if they are going to be late for class or lab.

It is the student's responsibility to obtain assignments and materials missed during any absence. Refer to testing policy regarding missing test.

Students are expected to take all tests on the day they are scheduled. Students must contact the instructor regarding their absence *prior* to the scheduled test time. Failure to do so will result in a test grade of "0". The student is expected to take a make-up test on the next day returning to school, unless instructed otherwise. Failure to take the test on the first day back will result in a test grade of "0". Although the make-up test will cover the same content, it will not necessarily include the same questions in the same format.

11.2 Clinical Attendance

Students are required to attend all clinical and lab experiences. Policies relative to clinical and lab experiences are enforced for all alternative activities at the discretion of the instructor(s).

The first and last week of each semester may have an altered schedule from your registered schedule. It is the student's responsibility to check their nursing course calendar and/or Moodle *prior* to the first day of class to verify beginning schedules and responsibilities.

The Clinical Instructor will notify the Program Director on a weekly basis of any student receiving an "Unmet" in the clinical arena. Depending on the circumstances, the Clinical Instructor, the Program Director, and the student may meet to discuss those factors leading to the "Unmet." Clinical performance is evaluated upon clearly defined objectives and competencies. A student that is repeatedly absent will not be able to meet the stated weekly objectives/competencies.

- Any clinical absence will result in a "U" for the clinical day and/or week.
- A "No Call" or "No Show" will result in a "U" for the clinical day and/or week. In addition, the student will be placed on Clinical Probation in the form of a Personal Improvement Plan (PIP).
- Weekly clinical attendance is required of this program. All clinical absences will count toward the eight percent (8%) course attendance policy if time is not made-up hour for hour within one week of absence. Clinical makeup days are not inherent in the clinical schedule.
- Students are not allowed to leave the clinical area prior to the scheduled departure time for any reason under any circumstances. Failure to leave the clinical area without direct permission from the clinical instructor will result in an automatic clinical attendance probation and/or immediate dismissal from the nursing program. Departure from the clinical area that in any way may affect patient safety will result in an immediate dismissal from the nursing program.

R-CCC ADN STUDENT HANDBOOK 2024-2025

11.3 Clinical Tardiness

Clinical tardiness is unacceptable and will not be tolerated on an ongoing basis. However, the clinical instructors recognize that extenuating circumstances may arise to make a student late. In the event of *extreme* circumstances in which the student will be late for clinical, the student must notify the unit at the clinical agency and the current assigned clinical instructor, per his/her instructions, at least 15 minutes prior to the scheduled time to begin clinical. Students with excused tardies that are up to late 15 minutes will be able to complete the clinical day; beyond 15 minutes, completion of the clinical day will be at the instructor's discretion. The first clinical tardy will result in a verbal warning along with documentation on the Clinical Anecdotal form, the second clinical tardy will place the student on clinical attendance probation, and/or dependent on circumstances, dismissal from the program.

11.4 Clinical Attendance Probation

Refer to Clinical Attendance, Clinical Tardiness and Clinical Probation/Dismissal

11.5 Illness During Clinical Attendance

If a student becomes ill during clinical practice, the student should notify his/her clinical instructor and proceed as directed. Students will not be treated in the clinical area. All costs involved in medical treatment are the responsibility of the student.

11.6 Inclement Weather

The program follows the schedule of the college during times of inclement weather. Announcements will be made on the radio and television as to the closing of the college. Students should exercise personal judgment concerning highway conditions regardless of college announcements, particularly those commuting to outlying areas for clinical practice. Students should notify the clinical instructor of their absence during times of inclement weather. Campus hours are designated as Monday through Friday, 0800-2200 and administrative office hours 0800-1700. If the campus is on a 2-hour delay, and it is a class day; report to campus at 1000. If the campus delay occurs during a clinical and/or simulation day, you are to report to the assigned clinical site or the assigned simulation site at 1000.

When time is missed due to inclement weather, alternative activities will be implemented to prevent students from falling behind in content.

12.0 EVALUATION

12.1 Class/Lab Evaluation

The opportunity will be provided to students to evaluate each nursing class and class instructor periodically throughout the semester.

12.2 Clinical/Lab Evaluation

Two attempts are permitted per student to successfully return skills in the lab. See 10.2 number 2.

A clinical evaluation of **S** (satisfactory) or **U** (unsatisfactory) may be earned. A satisfactory evaluation indicates that the student has met all clinical objectives as outlined in each individual course and has completed all additional clinical activities.

A clinical evaluation of unsatisfactory may be given at any point during a semester for any of the reasons outlined in 12.3. This list should not be considered inclusive. The student who is unable to meet the clinical objectives as outlined in the individual course, who uses unsafe methods of delivering patient care, who shows inadequate preparation in caring for patients, or who shows unprofessional conduct in the clinical area may receive an unsatisfactory for clinical evaluation. The unsatisfactory evaluation may

R-CCC ADN STUDENT HANDBOOK 2024-2025

also be given for repeated failure to submit satisfactory written assignments by designated date, uncorrected clinical probation, and/or absences or tardies as outlined in the section on clinical attendance. **A final clinical evaluation of U results in immediate withdrawal from the program and a grade of "F" in the course (see progression policy).**

12.3 Clinical Probation/Dismissal

In the clinical areas, the clinical instructors use their professional judgment in determining if a student is incapable of performing patient care or presents a threat to the health and safety of the patients. A student may be placed on clinical probation or dismissed from the program for reasons, which include, but are not limited to the following:

- Less than adequate preparation for clinical assignment(s),
- "No Call" or "No Show" for clinical,
- Unprepared for medication administration, medication errors, and medication administration without instructor approval,
- Performance of any procedure without securing appropriate supervision designated by the instructor,
- Unprofessional behavior and/or appearance,
- Performance (verbal or written) that threatens the health and safety of the patient, student, peers, clinical staff, and instructor,
- Unsatisfactory clinical practice,
- Use of cell phone for personal/social reasons during clinical time/patient care,
- Utilizing clinical computers for any reason other than clinical/educational needs,
- Falsification of information,
- Excessive tardiness/absences as outlined in the section on attendance,
- Violation of College's Student Code of Conduct Policy, or
- Leaving clinical setting without instructor permission.

The faculty member, along with the course lead instructor will recommend a student for clinical probation. A written performance improvement plan, outlining the unsatisfactory/ inappropriate behaviors, strategies/methods for correction, and a recommended period for the probationary period will be devised. This plan will be submitted to the ADN Program Director for review, consultation, and recommendation. A conference will be held with the student, faculty, and Program Director to address the terms of the clinical probation and plan. All parties will sign the plan indicating it has been reviewed. The student's signature indicates an understanding that violation of the agreement will result in further action, up to and/or including dismissal from the program.

Uncorrected clinical probation will result in an unsatisfactory clinical evaluation for the course and the student will earn a grade of 'F' and dismissal from the program (Refer to Readmission Procedure).

A student dismissed from the program may request a hearing. Refer to Section 20.1 and 20.2.

13.0 CLINICAL GUIDELINES

13.1 Essential Functions

Physical Requirements: Must be physically able to operate a variety of types of equipment including computer, calculator, nursing, other medical equipment, etc. Must be physically able to exert up to twenty-five pounds of force occasionally and/or frequently lift, carry, push, pull, or otherwise move objects. Must be able to lift and/or carry weights up to fifty pounds. Physical demands are more than sedentary work, including walking, running, standing, stooping, reaching, crouching, etc. for extended

R-CCC ADN STUDENT HANDBOOK 2024-2025

periods of time. Additional requirements include the ability to perceive attributes of objects such as size, shape, temperature, or texture by means of receptors in skin, particularly those of the fingertips. Students must also possess refined auditory and visual discrimination.

Data Conception: Requires the ability to compare and/or judge the readily observable functional, structural, or compositional characteristics (whether like or divergent from obvious standards) of data, people, or objects.

Interpersonal Communication: Requires the ability of speaking and/or signaling people to convey or exchange information, including the ability to receive information and instructions from instructors, patients, physicians, and other health care providers and provide feedback to same.

Language Ability: Requires the ability to read and comprehend a variety of documents, reports, and books such as medical charts, various medical texts, etc. Additionally, it requires the ability to prepare various documents and reports such as patient reports, etc., using proper format, punctuation, spelling, and grammar. Finally, it requires the ability to communicate with instructors, patients, physicians, other health care practitioners, etc. with poise, voice control, and confidence.

Intelligence: Requires the ability to use critical thinking skills and critical thinking skills to complete tasks accurately and within assigned periods. Furthermore, it requires the ability to apply principles of logical or scientific thinking to a wide range of intellectual and practical problems, to deal with nonverbal symbolism in its most difficult phases, and to comprehend the most abstract classes of concepts.

Verbal Aptitude: Requires the ability to record and deliver information and to follow verbal and written instructions. Additional requirements include communicating with others via effective verbal communication and integrating multiple abstract concepts and expressing them in a comprehensive and concise manner plus possessing knowledge of medical terminology and symbolism.

Numerical Aptitude: Requires the ability to utilize mathematical formulas; add, subtract, multiply, and divide numbers; determine percentages and decimals; determine time and weight; apply algebraic, geometric, and trigonometric principles; and utilize descriptive statistics. Additional requirements include the ability to utilize metric systems on a regular basis.

Form/Spatial Aptitude: Requires the ability to inspect items for proper length, width, shape, and depth.

Motor Coordination: Requires fine psychomotor coordination of hands and eyes in utilizing automated equipment, etc.

Manual Dexterity: Requires the ability to grasp, handle, hold, cut, push, pull, and feel plus manipulate a variety of control knobs, switches, etc.

Color Discrimination: Requires the ability to differentiate colors, shades, and tones of color.

Interpersonal Temperament: Requires the ability to deal with people beyond receiving instructions also adapt to performing under high stress when confronted with an emergency and when exposed to blood deep cuts, severe burn, open wounds, amputated body parts, death, etc.

Physical Communication: Requires the ability to talk and hear in addition to understanding several types of nonverbal communication.

Personal Traits: Requires the ability to build constructive and cooperative working relationships with others and maintain them over time and to develop specific goals and priorities to organize and

R-CCC ADN STUDENT HANDBOOK 2024-2025

accomplish work. Must demonstrate professionalism, show the ability to work alone or within a team, demonstrate integrity and sincerity, and show an attitude of caring and sensitivity. Requirements also include demonstrating neatness and good hygiene plus a positive attitude when receiving constructive criticism.

Travel: Requires the ability to travel to and from the College campus, clinical facilities, and other assigned locations off campus.

The student must be able to perform the Essential Functions, with or without reasonable accommodations. Please notify the Director of Admissions/Student Advisement or talk to your instructors privately if you have a need for disability-related accommodation. It is the student's responsibility to request reasonable accommodation if needed.

13.2 Professional Guidelines

The following are professional guidelines that all students are expected to follow. The student will:

- Comply with all policies of the college, nursing department, and clinical facilities, state and federal laws, and the Patient's Bill of Rights.
- Follow the department dress code.
- Keep patient information confidential. Discussion of patient information will take place only in clinical conferences or in private conversations with clinical instructors. Failure to comply with the agency's confidentiality policy will result in immediate dismissal.
- Interact professionally, courteously, and respectfully with college faculty, clinical instructors, and members of the health care team, patients, and peers.
- Do not contact any instructor or staff member by cell phone for anything other than emergent, time sensitive situations.
- Refrain from using cell phones, texting, and accessing social networking sites during *any* school-related activity.
- Be punctual in arriving to the classroom, lab, and clinical facility and report to the clinical instructor when leaving the clinical area.
- Report patient situations accurately, regardless of reflection upon self. If the situation requires an incident report, the student will complete the report according to the clinical facility's policy.
- Ask for supervision and assistance when needed and as directed.
- Utilize time efficiently and constructively.
- Demonstrate self-confidence in administering patient care.
- Complete all written work on time.
- Address all clinical instructors, members of the health care team, patients, and peers with their appropriate title (Dr., Mr., Mrs., Ms., Miss, and the surname unless otherwise directed).
- Performs self-evaluation of attainment of clinical practice objectives.
- Administers IV push medications at the discretion of and in the physical presence of their instructor.
- Avoid the use of tobacco products.
- Avoid the use of profane or obscene language and unprofessional behaviors.
- Avoid chewing gum.
- Maintains a reliable means of communication and transportation, valid telephone number, and email address on file in nursing department and in Moodle.
- Check Moodle and email accounts daily Monday-Friday during each semester enrolled.
- Blogging, posting personal status updates or engaging in online activities is not permitted during your clinical hours unless intended for appropriate clinical and research purposes.

R-CCC ADN STUDENT HANDBOOK 2024-2025

13.3 Student Appearance

Students are representatives of the college, nursing program, and nursing profession. Students are expected to dress and conduct themselves in a manner which will reflect the dignity of the profession and be good examples of cleanliness and health.

The purpose of these guidelines is to define the image of professionalism and to promote student and patient safety, comfort, and professional impression. This policy balances the expectations of professionalism with student desires for comfort and individual expression.

Students will comply with these guidelines, which are minimum standards for professional dress and appearance appropriate for today's quality healthcare workplace environment. Students will also adhere to dress standards established by the clinical facilities and Department as appropriate for the job, duties, and profession. Faculty and clinical instructors reserve the right to determine at its discretion what is and is not appropriate workplace attire and to address issues as they arise.

Name badges (and identification badges, if required by a clinical facility) are essential to dress as they identify students to patients, patient's family members, visitors, and members of the healthcare team. Students are required to always wear their badges while in clinical practice. Badges must be worn above the waist and displayed so that the information noted on the badge is always visible (not covered or reversed). Badges should not be covered with pins, ornaments, stickers, or any other objects. Clinical instructors may prohibit a student from participating in clinical practice without their badge(s).

Personal hygiene is critical to the professional appearance and perception of a healthcare professional. Particular attention should be given to skin, fingernails, hair, bathing, proper oral hygiene, and use of deodorant as needed. Students must keep their hair clean, well groomed, and away from the face in an orderly fashion that does not present a safety hazard. Beards, mustaches, and sideburns are to be neatly trimmed and groomed. The use of excessive makeup and strong fragrances should be avoided. Offensive or inappropriate tattoos must be covered. Artificial nails are not permitted. For this policy, inappropriate means any tattoo deemed by faculty to be inconsistent with the standards of a professional quality health care program.

Student uniforms should only be worn while performing clinical practice and while traveling to and from the clinical facility. The uniform may not be worn at any other time except while on the College campus. The student uniform shall consist of a uniform pantsuit (as specified by faculty). Females may choose to wear a uniform dress (as specified by faculty), which shall be no shorter than mid-knee. All students are required to wear a white lab jacket during any clinical activity not requiring a uniform. All uniforms should be clean, fit properly, be in good repair, and pressed or ironed as needed. Students must wear appropriate undergarments to avoid an unprofessional appearance. Leather (other than shoes) and sheer garments should be avoided.

Low heeled white leather shoes, without laces are required of all students. Shoes should be clean, in good repair, and coordinated with the dress attire. Open toed shoes, casual footwear, and beach footwear are not permitted. Dark socks are required to be worn with uniform pants. White color hosiery is required to be worn with uniform dresses. Uniforms should not be worn outside the clinical area, e.g., shopping, restaurants, etc. Nail polish is not to be worn in the clinical arena.

Jewelry and accessories should be kept to a minimum. Excessive jewelry and accessories can create an unsafe environment. Jewelry and accessories that are distracting in size and number are to be avoided. Only one (1) pair of stud earrings in earlobes is allowed. Offensive jewelry and accessories are not permitted. Facial, tongue, and other visible body piercings, except for earrings are not permitted.

R-CCC ADN STUDENT HANDBOOK 2024-2025

Students should not wear sunglasses or hats inside clinical facilities. The use of cell phones, smart watches, earphones, headphones, IPODS, etc. is not permitted in the clinical areas. Electronic devices containing reference software are allowed only in the conference rooms of the clinical agency.

13.4 Impaired Thinking

Impaired thinking constitutes a risk to patient safety. Impaired thinking is evidenced by an inability to make appropriate judgments and conduct functions in relation to the delivery of patient care. Impaired thinking may be the result of anxiety, sleep deprivation, medication use, illegal drug use, alcohol use, etc.

Any faculty member, clinical instructor, or representative of the health care agency who determines that a student is exhibiting evidence of impaired thinking will ask the student to leave the clinical area. The student may be given a clinical absence and/or unsatisfactory clinical grade depending on the situation, placed on clinical probation and/or dismissed from the program.

13.5 Student Health Reporting Policy

All students must notify the clinical instructor of all contracted diseases or health problems that might or could jeopardize the health of others.

13.6 Infectious Disease Policy

It is essential that all students carry health insurance, which will cover health care expenses incurred in treatment following exposure to infectious diseases.

Because of the nature of the health care profession, students participating in required clinical education experiences will find themselves at risk for exposure to infectious diseases. Even though the risk is extremely small, it cannot be eliminated. However, it can be minimized by careful and consistent techniques and the implementation of universal precautions in the care of all health care consumers. "Universal precautions" (i.e., gloves and safety glasses, gowns, hand washing, and masks where appropriate) will be implemented in the care of all patients. Because of the nature of the student patient relationship, the patient must also be protected from a student caregiver that may transmit infectious diseases.

Infection Control means preventing illnesses from happening or spreading in a health care setting to patients, employees, visitors, etc. For patients, infections can cause an increase in pain, length of stay in the hospital, and medical cost.

Infections can make students sick enough to miss school or spread the infection to family members. Infections usually occur in healthcare facilities for two reasons. First, sick people are treated in close quarters and second, procedures performed on patients may increase the risk of infection (such as surgery, insertion of a urinary catheter, insertion of IV's, etc.).

Hand washing is the single most important way to stop the spread of infection. Wash your hands:

- Before and after your work shift,
- Before and after every procedure with a patient,
- Before and after direct contact with every patient,
- After handling contaminated items or after contact with blood or any bodily fluid,
- After using the restroom, blowing, or wiping your nose, covering a sneeze, etc.,
- Before and after eating, drinking, handling food, or smoking,
- After handling paper goods such as patient charts, files, books, or newspapers,
- After removing gloves,

R-CCC ADN STUDENT HANDBOOK 2024-2025

- Whenever hands are visibly soiled,
- After using keyboards, tools, faxes, or phones,
- After contact with a patient's intact skin,
- After contact with body fluids, excretions, mucous membranes, non-intact skin, and dressings.
- If moving from a contaminated body site to a clean body site during patient care.

Jewelry harbors organisms so wear as little as possible. Keep natural nails and cuticles clean and neat. Good hand care is vital. Polish, gel, acrylic, etc. are not allowed in the clinical setting. No artificial nails should be worn in clinical areas. Use hand lotion provided by the hospital.

The CDC recommends the use of alcohol based waterless hand wash unless your hands are visibly soiled. Alcohol based hand rubs kill 99.9% of all common germs. You should use soap and water if your hands are visibly soiled.

13.6.1 Universal Precautions (also referred to as Standard Precautions)

Examples of viruses that can be transmitted by blood or body fluids are Hepatitis B (HBV), Hepatitis C (HCV), syphilis, and Human Immunodeficiency Virus (HIV). HIV is the virus that causes AIDS. Often one does not know that a patient has one of these diseases, because often they do not look sick. You can protect yourself from exposure to these diseases by following special precautions known as Universal Precautions. Universal Precautions are designed to reduce the risk of transmission of bloodborne pathogens and pathogens from moist body substances and applies to all patients regardless of their diagnosis or presumed infectious state.

13.6.2 Bloodborne Diseases

Bloodborne diseases are spread by contact with infected blood and other infectious body fluids. Infections are caused by microscopic organisms (pathogens) and can be present long before the infected person shows any signs of the disease. These organisms may be present in blood and serum, body fluids (such as semen, vaginal secretions, cerebrospinal fluid, synovial fluid, pleural fluid, amniotic fluid, pericardial fluid, peritoneal fluid, and anybody contaminated with blood), saliva containing blood, unfixed tissue, or body organs other than intact skin, organ cultures, culture media, or similar solutions.

Students should protect themselves by acting as if every patient they encounter has a bloodborne disease as two-thirds of infected patients do not have signs or have signs that can be mistaken for flu.

Students can reduce their risk of infection by completing mandatory infection control educational requirements such as obtaining immunizations (i.e., Hepatitis B, flu vaccine). The Hepatitis B vaccine is 85 – 97% effective. Students do not have to accept the vaccine; however, if they choose NOT to accept it, they must sign a written statement saying that it is their decision to refuse the vaccine. (The hepatitis B vaccine [set of three doses/shots] does not protect against other bloodborne hepatitis viruses.) Hepatitis B vaccine is used to immunize people of all ages against infection caused by all subtypes of the hepatitis B virus. There is no danger of getting Hepatitis B from the vaccine because no human substances are used to make it. Other mandatory infection control educational requirements include having a health screen performed and following important work practice controls. These include proper hand washing; not eating, drinking, smoking, applying cosmetics or lip balms or handling contact lenses where exposure to blood or other potentially infectious material is likely; not keeping food or drinks in refrigerators or on shelves or countertops where blood or other potentially infectious material may be present; using appropriate personal protection equipment (PPE) when doing mouth-to-mouth resuscitation/CPR and handling needles and sharps. PPE is equipment that protects you from contact with potentially infectious materials (examples of PPE include gloves, masks, protective eye wear, lab coats, resuscitation devices, etc.)

R-CCC ADN STUDENT HANDBOOK 2024-2025

PPE is effective only under normal conditions of use. When selecting and using PPE remember it must be used each time a task is done, it must be appropriate for the task, it must fit properly, and placed in the appropriate place or container for washing, decontamination, or disposal when removed.

All areas or items with the Biohazard symbol or the word “Biohazard” indicate that infectious materials are present and universal precautions must be used. Red is used for biohazard (i.e., red sharps containers). Non-contaminated items, such as computer paper and pizza boxes, should never be placed in biohazard containers.

13.6.3 Infection Control Exposure Protocol

Any student who is exposed to blood or body fluids of a patient should (1) wash or irrigate exposed areas immediately with soap and water and (2) report the incident immediately to the clinical instructor. Significant exposure includes percutaneous injury with a contaminated sharp object (needle, lancet, broken slide, etc.) and exposure of mucous membranes or open skin lesions to blood or body fluid of a patient. It will be the student’s responsibility to advise his/her clinical instructor immediately when an exposure has occurred and complete the following steps:

1. Students should complete an incident report form according to the guidelines of the clinical facility in which the exposure occurred.
2. Notify the clinical instructor immediately.
3. The clinical instructor will notify infection control staff at the clinical facility that will assess the situation and make appropriate recommendations, including any required testing and/or medical treatment. Students must comply with all recommendations.
4. The clinical instructor must fill out a report and forward it to the Security and Business Office verifying that an exposure has occurred. The report should document whether medical intervention is warranted. This report must be submitted within 24 hours of the date of the incident if medical intervention is needed.
5. Students should then report to Student Services to fill out the necessary paperwork.

13.6.4 Reporting an Incident

A student involved in an incident (accident) during class, clinical practice, or traveling to and from class or a clinical facility should complete the following steps:

1. If the incident occurred at a clinical facility, an incident report form must be completed according to the guidelines of the clinical facility in which the incident occurred.
2. Notify the clinical instructor within one hour of the incident.
3. The clinical instructor must fill out a report and forward it to the Security and Business Office verifying that an incident has occurred. The report should document whether medical intervention is warranted. This report must be submitted within 24 hours of the incident if medical intervention is needed.
4. Student should report to Business Office to fill out necessary paperwork for insurance carrier.
5. Students must submit claims for injury covered under the accident insurance provisions immediately, but in no instance later than 60 days, to expect coverage.

13.7 TB Control Policies (TCP)

The TCP is designed to provide students with information, guidelines, and policies designed to prevent exposure to tuberculosis (TB) bacteria.

TB is an infectious disease of the lungs and other organs caused by the bacterium Mycobacterium tuberculosis. TB is carried in airborne particles which can be generated when people sneeze, cough, speak or sing. The particles are so small that normal air currents keep them airborne and can spread

R-CCC ADN STUDENT HANDBOOK 2024-2025

them throughout a room or building. Infection occurs when a susceptible person inhales droplet nuclei containing TB. The probability that a person exposed to TB will become infected depends upon the concentration of infectious droplet nuclei in the air and the number of patients, environmental, and work practices influencing transmission of the disease.

In the healthcare setting, risks of transmission of TB are related to the area of the facility and type of procedures performed. Risks may be higher in areas where patients with TB are treated before diagnosis (i.e., clinical waiting areas, emergency rooms, and sites at which clinical diagnostic procedures are performed). High hazard procedures in a healthcare setting which may generate airborne respiratory secretions include aerosolized treatments, bronchoscopy, suction procedures, autopsies, open abscess irrigation, and dental work. Healthcare workers should be particularly alert to the need for preventing TB transmission in healthcare settings in which persons with HIV infections receive care, especially if cough-inducing procedures are being performed.

TB can be both symptomatic and non-symptomatic. With all forms of the disease, there may be symptoms of chronic infection, loss of appetite, night sweats, weight loss, fatigue, and low-grade fever. A dull aching in the chest is sometimes reported. TB can spread throughout the body and involve many organs and systems of the body.

All nursing students are required to undergo a two-step standard tuberculin (PPD) skin test, except for those previously documented as having a positive PPD skin test. The test is usually read 48-72 hours after injection. **THE TEST MUST BE PLACED AND INTERPRETED ONLY BY AN EXPERIENCED HEALTH PROFESSIONAL. NO STUDENT MAY INTERPRET THEIR OWN PPD SKIN TEST.**

Those students previously documented as having a positive PPD skin test will be considered by a physician for a chest x-ray. They should be educated in signs and symptoms of TB and instructed to report to their physician and notify their clinical Instructor if any symptoms are noted.

All previously PPD negative students should have, at a minimum, annual PPD skin testing. Those students previously documented as PPD positive should be considered by a physician annually for a chest x-ray and symptom check.

13.7.1 TB Exposure

All nursing students are at risk for exposure to TB. Patients must be isolated if they are in an active phase of their illness and are infectious and placed on Airborne Precautions. Any student exposed to TB must contact their clinical instructor immediately and follow the Infection Control Exposure Protocol.

If the student with a prior negative PPD skin test is exposed to a patient with TB, a baseline PPD skin test must be done immediately (unless a baseline has been done within the last three months) and again in eight to ten weeks. If a student converts from negative to positive, the student must be evaluated by the Health Department or his/her personal physician. The next step, according to Health Department policy, is an x-ray. If the x-ray is negative and the student is asymptomatic prophylactic medication should be recommended. This student would not have TB or be contagious so therefore is not mandated to take medication, it is a recommended choice. Roanoke-Chowan Community College has provided the student with student accident insurance that considers covered charges after the student's primary insurance has been exhausted.

Students with a prior positive PPD skin test who are exposed to a patient with TB will be counseled regarding symptoms of TB. If they become symptomatic, they should notify their clinical instructor immediately and be referred to the Health Department for further evaluation.

R-CCC ADN STUDENT HANDBOOK 2024-2025

13.8 General Safety Guidelines

Safety for patients, students, employees, visitors, and property is always the first consideration in healthcare. Key areas of concern are fire safety, hazardous materials and waste management, electrical safety, and magnetic resonance imaging (MRI) safety.

Fire Safety: Only equipment necessary for immediate use is allowed in the hallway. Other equipment is kept in a designated area. Do not use the elevator during a fire. When responding to alarms and drills, remain calm, listen for instructions, and make sure all hallways and means of escape are unobstructed.

To use a fire extinguisher, always remember the acronym PASS:

- P – Pull the pin
- A – Aim at the base of the fire
- S – Squeeze the handle
- S – Sweep from side to side

Hazardous Materials and Waste Management:

Safety Data Sheets (SDS) and labels are the best sources of information about a chemical's hazards and how to control them. Each department must maintain a current chemical inventory and an MSDS for each chemical used or stored in their department.

All students are required to use appropriate PPE when handling chemicals. If a chemical spill occurs on PPE, remove the equipment immediately. Properly rinse away chemicals spilled on other sources. Any student who may be exposed to hazardous chemicals should know how to use emergency eyewash equipment. For chemical splashes to the eyes hold both eyelids open and roll the eyeballs so water flows on all surfaces in the folds surrounding the eyeballs. A minimum of 15 minutes is recommended for initial first aid irrigation and dilution of a chemical splash to the eyes, face, and body.

Electrical Safety: Report any damaged equipment to your instructor as soon as you identify the hazard. Do not use tools/equipment that has been damaged.

Magnetic Resonance Imaging (MRI) Safety: The magnet is always on in the MRI area. Individuals with pacemakers and certain other metallic implants should not enter the MRI area. Oxygen cylinders and other metallic items should never be carried into the MRI area. **No one is permitted to enter the MRI area without the technologist present.**

13.9 Unsafe Practices

The Health Sciences faculty has both a legal and ethical responsibility to protect the public and health care community from unsafe practices. As a result of this obligation, discipline and/or dismissal from a program of study can occur for practices which are safety threats. Safety threats are those which threaten or have the potential to threaten the safety of a patient, a patient's family, another student, a faculty member, another health care provider, or themselves. Any faculty member or clinical staff who determines that a student cannot function at a safe level in clinical practice will notify the student to leave the area immediately and notify the clinical instructor. The faculty member or clinical staff and clinical instructor will discuss the situation and determine an appropriate course of action.

Any student denied clinical privileges by a clinical facility because of unsafe practices will be unable to complete the clinical portion of the program. A student who is unable to complete the clinical portion of a program will not be able to graduate.

14.0 GRADUATION

14.1 Student Responsibility

Students are responsible for proper completion of the program, familiarity with all requirements of the curriculum, maintaining the grade point average required, knowing their academic standing, and meeting all other degree requirements. Their faculty advisor will counsel them, but the final responsibility remains that of the student.

14.2 Graduation Requirements

Upon recommendation of the faculty and the approval of the College's Board of Trustees, the appropriate degree will be awarded to students successfully completing the course requirements of the program. All students must:

- Complete all required course requirements within established curriculum as prescribed in the catalog of record.
- Earn a minimum of a 2.0 GPA.
- Clear all financial obligations to the college.
- Complete at least 25 percent of credit hours required for the degree at the college.
- Nursing students must have an overall GPA of 2.0 with no grade less than "80" (B) in nursing courses or less than "C" in nursing –related curriculum sequence courses.

14.3 General Information

Awards are issued throughout the year. Students completing graduation requirements for degrees, diplomas, and certificates at points throughout the academic year must wait until the graduation ceremony following their completion to receive their award.

During the spring semester, prospective graduates will receive notification regarding all pertinent information relative to commencement. All prospective graduates are required to pay a graduation fee. Those who do not wish to participate in the commencement ceremony are still required to pay the graduation fee. The graduation fee includes the printing of the actual diploma and other expenses associated with the graduation exercises. The graduation attire and other accessories should be purchased through the college bookstore.

Students are eligible to graduate with High Honors and Honors. To be considered a High Honor graduate, the student must have an overall GPA of 4.0 upon completion of any degree or diploma program. To be considered an Honor graduate, the student must have an overall GPA of 3.75 to 3.99 upon completion of any degree or diploma program.

15.0 LEGAL AND ETHICAL STANDARDS

15.1 Code of Ethics

See International Council of Nurses (ICN) [ICN Code of Ethics for Nurses 2012](#)

See American Nurses Association (ANA) [ANA Code of Ethics](#)

R-CCC Health Sciences & Human Services Code of Ethics

You have been admitted into a program that requires the utmost commitment to ethics and integrity. Upon completion of the program, you will be a professional charged with enhancing and safeguarding the wellbeing of others—physically, mentally, and emotionally. People's lives will often be in your hands, as will the welfare and emotional support of their loved ones.

R-CCC ADN STUDENT HANDBOOK 2024-2025

Given the high ethical expectations of health science professionals, the R-CCC Health Sciences and Human Services Division places values like honesty, integrity, and accountability at the center of the program. While graduates must be highly competent and knowledgeable, without the requisite personal qualities of honesty and integrity, you will do a disservice to the profession at best, and at worst, you could endanger lives.

This Code does not attempt to codify every instance of academic dishonesty or unethical behavior. Instead, it provides a framework by which students can evaluate the kinds of decisions they make and assume full responsibility for those decisions.

The program faculty and administration recognize that maintaining the ethical standards of the profession that you have chosen to enter is a joint responsibility. As such, the faculty and administration are committed to the following:

- being as clear as possible about violations,
- providing educational opportunities for students to distinguish resources and appropriate tools,
- staying current with technologies and educational practices to anticipate increased risks,
- regularly assessing and evaluating relevant policies, and
- modeling and upholding the values of academic integrity, mutual trust, and respect.

As students, we expect that you will commit to the following:

- being informed of the department and college's expectations regarding honesty,
- having the courage to ask questions about ethical dilemmas and to share any incidences of violations that come to your attention,
- recognizing that any efforts aimed at reducing your own construction of knowledge are not true learning and are typically an ethical breach,
- respecting yourself, your classmates, faculty, and administration,
- cultivating an environment that stands up against wrongdoing and negative peer pressure,
- modeling and upholding the values of academic integrity and mutual trust,
- and maintaining client confidentiality and refraining from discussing clinical experiences, whether in person or on social media sites.

While the R-CCC Academic Regulations Policy outlines plagiarism clearly, the department provides you with additional details regarding common examples of academic dishonesty. This list is not exhaustive, so an omission from the list does not absolve you of responsibility for unethical conduct. The list is merely provided as an educational tool and resource:

1. Use of text banks. If you have any questions about the nature of *any* electronic resources that you find during your studies (Quizlet, Course Hero, Chegg, Course Archives), please bring those questions to the respective faculty member.
2. Giving, receiving, or obtaining information pertaining to an examination before or during an examination period, unless authorized by the instructor. This includes the use of answer keys.
3. Accessing tests after the test is administered, whether the test was administered electronically or in paper and pencil version. Test review practices vary between faculty members. Students wanting to review tests should refer to the course syllabus and assigned faculty for the proper process for this review.
4. Submitting an exam containing unauthorized information without reporting it to the instructor.
5. Seeing dishonorable conduct and failing to report it.

R-CCC ADN STUDENT HANDBOOK 2024-2025

15.2 Confidentiality

Patient information, employee information, and clinical facility information (whether printed, written, spoken, or electronically produced) is confidential. Students may see or hear confidential information on:

- Patients and/or family members, such as patient records, conversations, and financial information.
- Employees, volunteers, other students, contractors, and partners, such as salaries, employment records, and disciplinary actions.
- Business information, such as financial records, reports, memos, contracts, and clinical facility computer programs and technology.
- Third parties, such as vendor contracts.
- Operations improvement, quality assurance, and peer review, such as reports, presentations, and survey results.

Students are obligated to protect and keep confidential information with which they come into contact at the clinical facilities.

- Students should only access patient information, including the clinical facilities' computer systems, for appropriate purposes such as patient care and records processing.
- Students should not disclose their password used for computer access to another or use another's password.
- Students should not make unauthorized copies of confidential information.
- Students should not dispose of any confidential information unless instructed to do so. If instructed to do so, students must follow correct departmental procedure for disposal (such as shredding paper before throwing it away).

Any violation of confidentiality or unauthorized computer access may result in revocation of the ability to perform clinical practice, revocation of computer access, and other disciplinary action up to and including dismissal from the program. Federal and state laws also govern unauthorized access and use of confidential information, including access to a computer system for an unauthorized purpose.

15.3 HIPAA

The Health Insurance Portability and Accountability Act (HIPAA) is an act passed by congress to protect confidentiality of medical records.

HIPAA is a federal law that includes requirements relating to the following areas:

- It provides the "portability" of health care coverage so that individuals can transfer from one health plan to another without exclusions and limitations relating to preexisting conditions.
- It prohibits discrimination relating to health plan eligibility and premiums.
- It establishes increased surveillance and penalties relating to fraud and abuse.
- It includes administrative simplification provisions that establish standards for electronic transmissions of certain health information.

The administrative simplification provisions of HIPAA relate to maintaining privacy and security of individually identifiable health information by prescribing how such information is to be shared, transferred, and stored.

Agencies that evaluate patient privacy and confidentiality are:

- Joint Commission (JC),
- Centers for Medicare and Medicaid Services (CMS) - manages Medicare, Medicaid, and child health insurance programs,

R-CCC ADN STUDENT HANDBOOK 2024-2025

- National Committee for Quality Assurance (NCQA), and
- Federal and state governments.

Protecting the privacy of patients and patient confidentiality are things completed routinely. It is something taught at all levels of healthcare education and is always an expectation of health sciences students.

You breach confidentiality by talking in public areas (hallways, elevators, cafeteria, classrooms, etc.), giving information about a patient without his/her permission, and accessing information on patients for which you are not providing care. Accessing patient information must be limited to what a student needs to know to complete their assignment.

Clinical sites participate in diverse types of transactions that are or will be subject to HIPAA requirements. They will follow policies and procedures regarding handling internal administrative functions and relationships with other involved parties to achieve HIPAA compliance regarding various transactions.

Students have an obligation to protect and keep confidential all protected health information. Students must not at any time use, access, or disclose protected health information to any person or entity, internally or externally, except as required and permitted in the course of duties and responsibilities as a student. This obligation extends to any protected health information with which students may come in contact during clinical practice experiences and includes protected health information in oral, written, and electronic form. Students must access patient information, including the clinical facilities' computer system only for appropriate purposes such as patient care and records processing. Students must not disclose their password used for computer access to another or use another's password. Students must only access or attempt to access information they are authorized to access.

Unauthorized use or disclosure of protected health information or unauthorized computer access may result in disciplinary action by the clinical facility and/or College, up to and including dismissal from the program. It may also result in the imposition of civil penalties under applicable federal and state law, as well as professional disciplinary action as appropriate.

Students are responsible for reporting to the clinical instructor any known or suspected violation of HIPAA policies, procedures, and requirements.

Students are responsible for completing any HIPAA training required by any clinical facility.

15.4 Clinical Requirements

Clinical facilities may require criminal background checks, drug screenings, professional license checks, and/or proof of US citizenship prior to or during participation in the clinical portion of a program. Pending the outcome, clinical facilities may deny a student the opportunity to complete the clinical portion of a program. A student who is unable to complete the clinical portion of a program will not be able to graduate. These checks may also be required after graduation by examination boards, state licensing boards, and employing agencies. Pending the outcome, a graduate may be disqualified from examination eligibility, state licensure, and/or employment.

15.5 Professional Licensing Examination

Per North Carolina Board of Nursing Protocol.

Upon satisfactory completion of educational requirements and verification by the ADN Program Director, the student is eligible to take the licensing exam. The registration process for licensure by

R-CCC ADN STUDENT HANDBOOK 2024-2025

examination includes:

1. Apply for licensure in North Carolina. The application for NC is an on-line application and is valid until you are declared eligible and issued an ATT up to a maximum of 1 year,
2. Meet all the board of nursing's eligibility requirements to take the NCLEX® examination,
3. Register and pay for the NCLEX® examination with Pearson VUE,
4. Receive eligibility from your board of nursing, and
5. Pearson VUE will send an Authorization to Test (ATT) The name (first, middle, and last) on your ATT must match exactly the name on your identification. You must have your ATT document to schedule your exam date, time, and location. You must take your ATT to the test center on the day of your examination. You will not be admitted to the examination without your ATT. Instructions for scheduling examination will be included with the ATT. An ATT is valid for 180 days. If you miss your appointment, are turned away from the testing center, or the ATT expires, you will have to apply to NCBON to re-establish eligibility.

15.6 Licensure Eligibility

In accordance with the provisions of Chapter 150B of the General Statutes, the NC Board of Nursing (GS 90-171.37) may deny licensure, revoke, or suspend a license or invoke disciplinary measures in which the Board determines that the nurse or applicant:

- Has given false information or has withheld material information from the Board in procuring or attempting to procure a license to practice nursing,
- Has been convicted or pleaded guilty or nolo contendere to any crime which indicates that the nurse is unfit or incompetent to practice nursing or that the nurse has deceived or defrauded the public. Conviction shall not automatically bar licensure. The Board of Nursing shall consider factors regarding the conviction (90-171.48),
- Has a mental or physical disability or uses any drugs to a degree that interferes with his or her fitness to practice nursing,
- Engages in conduct that endangers the public health,
- Is unfit or incompetent to practice nursing by reason of deliberate or negligent acts or omissions regardless of whether actual injury to the patient is established,
- Engages in conduct that deceives, defrauds, or harms the public during professional activities or services,
- Has violated any provision of the Nurse Practice Act, G.S. Chapter 90, Section 1, Article 9A, and/or
- Has willfully violated any rules enacted by the Board of Trustees.

15.7 Certification/Licensure Opportunities

(Prior to completion of associate degree)

NA I listed students satisfactorily completing the second semester of the ADN A45110 program are eligible to apply for NA II listing through the NC Board of Nursing. A current NA I listing is required prior to admission to the ADN program and to obtain a NA II listing.

16.0 STUDENT CONDUCT

16.1 Cheating

The faculty has the responsibility for seeing that all students receive credit for work which they have completed. All students are expected to be honest in all dealings with members of the staff and faculty of the College and staff members and patients in all clinical facilities. Students are also expected to report any observed instances of dishonesty to the instructor in charge. **Failure to do so makes the**

R-CCC ADN STUDENT HANDBOOK 2024-2025

observer as guilty as the one who is cheating. Students will not receive credit for work which is not their own.

Any faculty who discovers cheating or to whom cheating is reported will investigate the matter fully with the test administrator. If after careful consideration of all documented evidence, the test administrator believes cheating has occurred, the document evidence will be presented to the nursing director who will review the information. If the nursing director concurs, the student will be presented with a formal letter stating his/her dismissal from the program.

Upon investigating and it is determined that the student did indeed cheat, the student will receive an (F) for the class in which the student was caught cheating. If the student exited other NUR courses with incomplete work, that student will receive a zero (0) for the incomplete assignments and those grades will be calculated in with the rest of the grades for computation of a final grade.

16.2 Plagiarism

Plagiarism is the use of someone else's words, writings, thoughts, or ideas without giving proper credit. Taking a section of a book or a magazine article and copying it word for word without giving proper credit to the author is one example of plagiarism. The faculty who detects plagiarism will review with the student the circumstances which constitute plagiarism. The student will be required to re-submit the work to receive credit and the student's grade will be adjusted accordingly. A second instance of plagiarism during any time thereafter will be considered cheating and treated as such.

16.3 Drug/Alcohol Use

The ADN program intends to maintain a drug and alcohol-free environment. It is our belief that students impaired by use of mind-altering substances are harmful to themselves, the mission of the College and programs, the safe care of patients, the performance of the student role, and the well-being of fellow students. Under no circumstances will student possession or use of any mind-altering substances be tolerated at the College or any clinical facility.

Mind-altering substance is defined as any chemical, natural or manufactured, which when taken into the body may cause alterations of personality, emotion, cognition, or behavior. Mind-altering substances may also be more commonly referred to as alcohol, drugs, substances, or chemicals. Examples include:

- Use of any illegal drugs,
- Presence of blood alcohol content,
- Use of non-prescribed controlled drugs,
- Improper or excessive use of prescription or over-the-counter medication, which results in impairment, and
- Use of other mind-changing chemicals, which results in impairment.

The following situations may indicate that a student is abusing mind-altering substances and should heighten the awareness of the faculty, clinical instructors, and other students to that possibility:

- Smelling of alcohol,
- Bringing on the premises or being in the possession of alcohol, illegal drugs, or other non-prescribed controlled substances,
- Behaviors associated with the use of mind-altering substances,
- Deteriorating patterns of performance or personal conduct,
- Information from a credible source which indicates a student is abusing mind-altering substances,
- An accident,
- Stealing or diverting medications,

R-CCC ADN STUDENT HANDBOOK 2024-2025

- Conviction of a drug statute, and/or
- Legal charges involving mind-altering substances.

Students enrolled in the ADN program are ethically obligated to report to class, lab, and clinical in sound mind and body. A student who reports to class, lab or clinical impaired in any way by alcohol, over the counter medications, prescription medications, or illegal drugs are in violation of R-CCC policies and the clinical involvement agreement. In addition, violation of the clinical involvement agreement is grounds for immediate dismissal from the nursing program.

16.4 Professional Activities

Students will conduct themselves as adults and in a manner which will always reflect positively upon Roanoke-Chowan Community College and the nursing department while attending and/or participating in professional activities.

When the activity involves a professional conference, students must participate in the meetings and workshops, as well as other official conference activities. Students must abide by the rules of the conference, the hotel in which they are a guest, and the program during the conference. Failure to do any of the above may result in a student being asked to leave the conference, appropriate disciplinary action taken by the college, and being denied future conference participation.

16.5 Laboratory Security

Equipment and supplies located in the laboratory are the property of the college. Removal of the equipment and supplies from the laboratory without direct supervision and instruction by faculty or written consent from the appropriate college representative will be handled in accordance with North Carolina statutes.

16.6 Electronic Recording Devices

It is the policy of the ADN program that no electronic recording devices are used to record classroom or clinical practice experiences. Requests for appropriate accommodation from students with documented disabilities, who have made initial contact through Student Services, will be reviewed on a case-by-case basis.

16.7 Cell Phones and Other Electronic Devices

Cell phones and smart watches must be set to silent mode during class and are not permitted during testing. Phone calls and texting during class as well as clinicals are not permitted. The use of cell phones, smart watches, earphones, headphones, IPODs, etc. is not permitted in the clinical areas. Electronic devices containing reference software are allowed only in the conference rooms of the clinical agency.

16.8 Social Networking and Media Policy

Students have a responsibility to maintain social networking and media sites (i.e., Facebook, Twitter, YouTube) in a professional manner. Any posts in a social network or media site used in a derogatory manner can be held against the student. Posts that threaten faculty, staff, other students, and/or clinical facility employees may result in disciplinary action including dismissal from the program.

16.9 Receipt of Gift Policy

The ADN program strives to be above reproach in all matters. This includes perceptions of fairness and objectivity. Faculty members must not use their position, authority, or relationship with students to obtain uncompensated labor for their own personal or economic gain. They may not ask students to perform services unrelated to legitimate academic activities unless the student is adequately compensated for such services. Faculty members must not solicit gifts or favors from students. They

R-CCC ADN STUDENT HANDBOOK 2024-2025

must not accept gifts or favors where they have reason to believe that such a gift or favor is motivated by a desire to secure academic advantage. Therefore, ADN faculty must not accept personal gifts beyond the small token of appreciation from students. In every circumstance, faculty members should avoid accepting even token gifts from students prior to submission of final grades for those students or completion of supervision.

16.10 Professional Guidelines

The following are professional guidelines that all students are expected to always follow during class and lab. The student will:

- Comply with all policies of the College and department,
- Follow the College dress code,
- Be punctual in arriving at the classroom and lab,
- Ask for supervision and assistance when needed and as directed,
- Utilize time efficiently and constructively,
- Complete all written work on time,
- Interact professionally, courteously, and respectfully with college faculty and staff,
- Address all faculty and staff with their appropriate title (Dr., Mr., Mrs., Ms., Miss, and the surname unless otherwise directed),
- Avoid the use of tobacco products,
- Avoid the use of profane or obscene language and unprofessional behaviors,
- Avoid chewing gum,
- Avoid using cell phones, texting, and accessing social networking sites,
- Maintains a reliable means of communication and transportation, valid telephone number, and email address on file in nursing department and in Moodle,
- Check Moodle account regularly Monday-Friday during each semester enrolled, and/or
- Blogging, posting personal status updates or engaging in online activities is not permitted during your classroom or lab hours unless intended for appropriate clinical and research purposes.

17.0 STUDENT INSURANCE

17.1 Medical Insurance

All students are strongly encouraged to carry hospitalization and medical insurance. Accident insurance is available through the College and information regarding this insurance may be obtained from the Student Services division.

17.2 Malpractice Insurance (subject to change)

All health sciences students are required to carry student professional malpractice insurance through Roanoke-Chowan Community College. The College has arranged for a blanket coverage policy through American Casualty Company of Redding Pennsylvania. Key points of this coverage are:

- Limit of Liability: "Pay up to \$1,000,000 for each claim to a total of \$5,000,000 in any one year."
- Methods of Payment: The annual premium will be in addition to tuition to be paid during registration.

This malpractice insurance is mandatory for all students participating in a clinical experience without exception. Students without insurance will not be allowed in the clinical area and will receive an unexcused clinical absence.

18.0 STUDENT GUIDANCE

18.1 Student Transportation and Housing

Students are responsible for their own transportation to and from the college and all clinical facilities. Student carpools are the responsibility of the individual student and not the responsibility of the college or program. Arrangements for transportation should be made prior to entering the program. Transportation to and from clinical facilities out of the four-county area may be arranged and provided by the college, when possible.

The College does not provide student housing. Living arrangements are also the responsibility of the individual student. All students must keep the College informed of their current address and phone number. R-CCC assumes no responsibility in any financial arrangement between the student and the property owner.

18.2 Student Employment

Employment while in the nursing program is strongly discouraged. The student who must work in addition to attending college should consider the effect that working may have on the grade point average. No absences or tardiness will be allowed for work conflicts.

If the student is employed by a facility, which is used as a clinical facility by the Associate Degree Nursing program, the student should be aware that the nature of those responsibilities should in no way be related to their responsibilities as a student and the student uniform may never be worn while functioning in roles outside of clinical practice. The employing facility takes full responsibility for the student employee's actions while working and neither the Associate Degree Nursing programs administration and/or faculty nor Roanoke-Community College will be responsible for any student's activities while functioning in the role of an employee.

18.3 Student Health Services

The College maintains no health care facilities other than first-aid supplies and AED. First aid supplies are available in the Jernigan Building (JER 124), New Student Center (Student Development Services), Young Building (Welding Classroom), Freeland Building (Cosmetology and Nursing Departments), and the Freeman Building (Barbering Classroom and Early College). The responsibility for medical services and associated costs rests with the student.

Emergency facilities are available at ECU Health Roanoke-Chowan Hospital in Ahoskie. Students who do not have a local physician are encouraged to contact a physician who will treat them when they are ill prior to entering the program.

18.4 Reporting an Incident

A student involved in an incident during class, clinical practice, or traveling to and from class or a clinical facility should complete the following steps:

1. If the incident occurred at a clinical facility, an incident report form must be completed according to the guidelines of the clinical facility in which the incident occurred.
2. Notify the clinical instructor within one hour of the incident.
3. The clinical instructor must fill out a report and forward it to Student Services verifying that an incident has occurred. The report should document whether medical intervention is warranted. This report must be submitted within 24 hours of the date of the incident if medical intervention is needed.

R-CCC ADN STUDENT HANDBOOK 2024-2025

4. Students should then report to Student Services to fill out the necessary paperwork for insurance carrier within 30 days of the incident.
5. Students must submit claims for injury covered under the accident insurance provisions immediately, but in no instance later than 30 days, to expect coverage.

18.5 Learning Resources

Nursing students are expected to consistently use outside resources in the learning process. The College has an excellent Library on campus. The library provides students with current literature via professional journals, audiovisual learning resources, and current editions of the most relevant texts, reference books, and supplementary books. Nursing students should consider learning resources of a clinical nature, which are more than five years old, outdated and not acceptable for use.

19.0 STUDENT ORGANIZATIONS

19.1 Student Government Association

The purpose of this organization is to promote in each student a personal sense of pride and responsibility in the College and to accept his democratic responsibilities as an American citizen. The Student Government Association (SGA) acts as an intermediary between the student body and the administration of the College, serving as a student forum representing the student's views on the College's faculty and administration. It also cooperates with the administration in the coordination and the supervision of student activities. Activities supported by the SGA include multi-cultural activities, school cookouts, athletic events, leadership training and community projects. The activities of the Student Government Association are funded by student activity fees. All students who pay activity fees are members of the SGA.

19.2 Departmental Organizations

Class Organization

The class organization should exemplify leadership, professionalism, and be a role model to fellow nursing students. The organization will be responsible for raising funds for meeting community needs, NCLEX review, and class trips. The group should seek guidance from the Faculty Advisor before moving on any actions directly affecting the class. Any student on the organizational team that does not reflect the philosophy of Roanoke-Chowan Community College ADN Program will be asked to step down by the faculty advisor.

20.0 STUDENT APPEAL AND GRIEVANCE

20.1 Appeal Procedure

Students who question the fairness of disciplinary action taken against them are entitled to due process by submitting a written notice of appeal. Any disciplinary determination resulting in suspension or expulsion from the College may be appealed to the President or designee. The notice of appeal must be sent to the Office of the President within **ten** working days after receipt of disciplinary action. The appeal must be in writing, sent to the Office of the President by certified mail, return receipt requested.

The Student Conduct and Appeals Committee may hear the appeal. The committee shall conduct closed proceedings that guarantee procedural fairness. The committee may recommend that the student be exonerated or disciplined. If discipline is recommended, the committee may advocate an official written reprimand, probation, or one of the following penalties:

1. Suspension from the College for a specified time, not to exceed two semesters, or until a condition is met,

R-CCC ADN STUDENT HANDBOOK 2024-2025

2. Dismissal from the college for an unspecified period, or
3. Permanent expulsion from the college.

The committee shall present its findings and recommendations to the President of the college within five working days of conclusion of the hearing. The President, after a full and complete review, will notify the student of the results of the hearing. The President's decision shall be final.

20.2 Student Grievance Procedure/Due Process

Purpose:

The purpose of the student grievance procedure is to provide a system to channel student complaints against faculty or staff (support and administrative) concerning the following:

- A. Alleged discrimination based on age, sex, race, disability or other conditions, preferences, or behavior, excluding sexual harassment complaints.
- B. Sexual harassment complaints should be directed to the Associate Vice President of Student Services. Copies of the procedure may be obtained from this office.
- C. Academic matters, excluding individual grades except where the conditions in item "A" above apply.

Procedure:

1. The student must go to the instructor or staff member where the alleged problem originated. An attempt will be made to resolve the matter equitably and informally at this level. The conference must take place within ten working days of the incident which generated the complaint. The student and instructor are encouraged to seek resolution informally before filing an academic grievance.
2. If the complaint is not resolved at the informal conference with the instructor or staff member, the student should meet with the faculty or staff member's direct supervisor within ten working days after meeting with the faculty/staff person with who the grievance is filed. As part of the effort to resolve the issue, the supervisor will consult with the accused and chief administrative officer of the division concerned.
3. If the complaint is not resolved at the informal conference with the direct supervisor, the student may file a written grievance. The student must put the grievance in written form, and shall include both a simple, straightforward statement of the grievance, and a short, plain statement of facts that the student believes supports the contention. The written grievance must be presented to the Office of the Associate Vice President of Student Services within ten working days after satisfying Step 2. The Office of the Associate Vice President of Student Services will refer the written grievance to the chief administrative officer of the division.
4. The Associate Vice President of Student Services will notify the chairperson of the Student Conduct and Appeals Committee within ten working days upon notification of the grievance to convene the committee and conduct a hearing. The Committee Chair will convene the Committee within ten working days upon Associate Vice President of Student Services' notification. Following hearing procedures, the committee will decide by a majority vote the solution of the grievance and forward a recommendation and findings to the Associate Vice President of Student Services and the Office of the President within five working days after the hearing. The President will review the committee's findings/recommendations, make a final decision, and notify the student in writing within ten working days. The President's decision shall be final.

21.0 STUDENT AGREEMENTS

21.1 Student Policy Agreement (*Sample*)

I have read and received an explanation of and understand the nursing student policies as outlined in this handbook. I also understand that I must comply with and follow these policies during the period of my enrollment as a nursing student at Roanoke-Chowan Community College.

21.2 Reference Agreement (*Sample*)

I grant permission for the nursing faculty to serve as a reference for me and discuss my academic and clinical progression and standing with any clinical facility, professional organization, or educational institution. Purpose(s) of the reference is:

1. Application for employment,
2. All forms of scholarships or honorary awards, and/or
3. Admission to another educational institution.

Further, I hold Roanoke-Chowan Community College and its officers, faculty, and staff harmless from any discussion of my academic and clinical progression and standing with clinical facilities, professional organizations, and educational institutions. I understand that I have the right not to consent to the release of my academic and clinical progression and standing. I have the right to receive a copy of any written reference upon request. This consent shall remain in effect until revoked by me, in writing, and delivered to the nursing director, but that any such revocation shall not affect disclosures previously provided by the Nursing faculty prior to the receipt of any such written revocation.

21.3 Video Release Statement (*Sample*)

I agree to allow Roanoke-Chowan Community College and/or agent contracted by Roanoke-Chowan Community College to video, photograph, or record my name, likeness, image, biographical information, voice and/or statements.

I agree that such recordings or images may be used in whole or in part for publication, broadcast, multimedia production, Internet distribution, or illustration as deemed appropriate by Roanoke-Chowan Community College. I do not expect to be compensated in any way.

I also release Roanoke-Chowan Community College and its officers, faculty, and staff from all claims based on the use of such recordings and agree to hold Roanoke-Chowan Community College harmless from all claims by third parties, including any claim based on allegation of copyright infringement from my statements.

R-CCC ADN STUDENT HANDBOOK 2024-2025

21.4 ECU HEALTH CONFIDENTIALITY AGREEMENT (*Sample*)

I understand that all patient information, all information regarding employees and contracted personnel, all competitive healthcare information (information not known or readily ascertainable to the public) and all information ECU Health and its subsidiaries (collectively referred to as "ECU Health") are required by law to keep private (collectively referred to as "confidential information"), in whatsoever form (including but not limited to electronic and/or digital format, printed, written, and/or spoken) is confidential. I agree not to disclose, repeat, reveal or share any confidential information with anyone else unless I receive the express written permission of ECU Health or I am required by state or federal law or permitted by internal ECU Health policy; provided, however, I may disclose private health information for treatment, payment or health care operations and confidential information to others who need to know within ECU Health in accordance with ECU Health policies. I further understand and agree that I will only access such confidential information as needed for me to perform my job or my contracted responsibilities.

I agree to take all necessary and reasonable steps to prevent and limit the improper or unauthorized disclosure or misuse of confidential information including, but not limited to, keeping confidential information private and out of public viewing; securing or protecting information on my computer when leaving my workstation; copying or downloading data only to secured locations and only when required to perform job duties and not discussing confidential information in public areas.

I agree to abide by all ECU Health policies regarding confidentiality and security of confidential information currently in effect and which may be amended from time to time. I further agree to comply with all applicable state and federal laws governing access to computer systems and protection of confidential information.

I accept complete responsibility for my actions, and I understand that any violation of this Confidentiality Agreement may result in immediate revocation of my access to confidential information, removal from ECU Health premises, disciplinary action up to and including termination of employment, ability to provide services, and/or revocation of my ability to practice at ECU Health. (A member of the Medical Staff is subject to disciplinary action in accordance with Medical Staff Bylaws.)

My signature attests to the fact that I have read, understand, and agree to abide by the terms of this Confidentiality Agreement.

Date: ____/____/____

Signature: _____

Witness: _____

**Witness must be 18 years of age or older*

Approved: 7/13/1998

Revised 10/1998, 5/2006, 1/2012, 6/2022

R-CCC ADN STUDENT HANDBOOK 2024-2025

21.5 APPENDIX A—CERTIFICATION BY STUDENT (*Sample*)

I am _____ a student at _____ I understand that while I am on the Hospital's premises, I must follow all of its policies and procedures. I have been informed of these policies and procedures. Any questions I had regarding them have been answered fully.

Infection Control

I do not, to the best of my knowledge, have an infectious disease or a contagious health problem that might or could risk a patient's or employee's health at Hospital. I agree to immediately notify Hospital if I contract or become aware that I have an infectious disease or a contagious health problem that might or could put at risk a patient's or employee's health at Hospital.

Confidentiality

I understand that all patient health information, including a name of a patient, is confidential under federal and state law. I agree not to repeat or share any patient health information that may be revealed to me, provided, however, that if I am required by law to disclose patient information, I agree to contact Hospital prior to disclosure. I further agree not to access any patient information that I have not previously received permission to access. I agree to safeguard all patient health information and follow the Hospital document destruction policy for any item that contains specific patient identifying information. In the event I accidentally or willfully violate Hospital's policies or procedures relating to patient confidentiality, I will report such violation as soon as possible and no later than 5 business days after such violation.

Criminal Background

I understand that my criminal background will be checked according to ECU Health policy. Currently, this requires a criminal background check by a Third-Party Vendor before enrollment or admission into any program requiring a clinical education experience. I also understand that, during the term of my clinical experience, I am under a continuing obligation to disclose any felony and/or any misdemeanor offense (excluding a traffic offense); or any changes in my criminal record that may arise or occur after I sign this certification before the next scheduled clinical date.

Liability

In consideration for being permitted to access various clinical settings, I hereby voluntarily waive and release Hospital, its successors, assigns and affiliates and its directors, officers, agents and employees from any liability for any and all claims or causes of action I, my heirs or assigns might now or hereafter have for injury, loss, damages or death arising out of, or as a consequence of, or incident to my presence in the clinical experience. I further agree to hold Hospital harmless from all claims, losses, liability, and demands that I may incur or realize due to my negligence, gross negligence, willful misconduct, or violation of this Agreement.

Miscellaneous

I understand that the privilege of being allowed to participate in the clinical experience depends on my executing and complying with this Agreement. I understand that this privilege may be revoked or modified at any time without cause or prior notice at the Hospital's sole discretion. By affixing my signature below, I certify that I have read and understood this Agreement and Waiver and Release From. Furthermore, by affixing my signature below, I hereby authorize the Hospital to use or disclose any information furnished by me or my School to any public health or governmental Hospital, in order to comply with any applicable Joint Commission (TJC) standards, or for any internal use of the Hospital (including, its affiliates, subsidiary or parent corporations).

I understand that my clinical education requirements include compliance with policies and procedures for clinical education students as currently posted on Hospital's website and as updated from time to time, and that I am under a continuing obligation to remain in compliance with the same and to advise Hospital of any changes in my compliance status as such arises. Currently, such compliance includes BLS compliance and compliance with drug screenings. The parties agree to and adopt the terms and conditions of the Uniform Electronic Transactions Act, as adopted in North Carolina General Statutes Chapter 66, including but not limited to the previous governing electronic signatures. As such, this Agreement is "signed" if it includes a digital signature, symbol, and/or action that is adopted or performed by either party or party's Electronic Agent with the present intent to authenticate or manifest assent to the Agreement.

Student Signature

Date

Witness Signature (*Must be 18 years of age or older*)

Date

R-CCC ADN STUDENT HANDBOOK 2024-2025



21.6 ECU Health Training for Clinicals

School: Roanoke-Chowan CC

Faculty: ADN Faculty

Please follow the instructions for completing the required training to attend clinicals:

1. Go to rotationmanager.com
2. Click “**REGISTER**” at the top of the page.
 - a. Fill in the required information (as a **STUDENT**).
 - b. Use the dropdown arrow to find “**SCHOOL-CAMPUS-DISCIPLINE**” {**ROANOKE CHOWAN-AHOSKIE-NURSING**}.
 - c. Enter your “**EXPECTED GRADUATION DATE**” {**MAY 20XX**}.
 - d. Leave the “**SCHOOL ID**” blank.
 - e. Supply your current mailing address and phone number.
 - f. Supply your school email. If you have used your school email for another discipline, please use your personal (a professional sounding) email.
 - g. Create and remember your password. ADN Faculty and Staff will **NOT** access your password.
 - h. Supply your debit/credit card information for payment. [**Registration is not complete until the payment is made and cleared**]
 - i. Click the box beside “**I AGREE to the LICENSE AGREEMENT.**”
 - j. Click “**AGREE AND REGISTER.**”
 - k. You should see the required training items for completion

3. Click every download to change the  to 
 - a. This directive includes completing the Core Orientation, EHR Orientation, Safety Culture, & Nova StatStrip trainings for certificates to submit to Staff.
ATTENTION: ONLY LEGAL NAMES ARE ACCEPTED.
 - b. **DO NOT PRINT ANY FORMS, THEY WILL BE PROVIDED FOR YOU**
4. Do **NOT** upload any documents

Print Name: _____

Date: _____

Signature: _____

R-CCC ADN STUDENT HANDBOOK 2024-2025

21.7 Clinical Involvement Agreement/Controlled Substances (*Sample*)

**Roanoke-Chowan Community College
Associate Degree Nursing Program**

As a student enrolled in the Associate Degree Nursing program of Roanoke-Chowan Community College, a program that includes clinical practice involvement, I, the undersigned, understand fully the sensitive nature of such programs and recognize that it is a privilege. I and any student participating in clinical practice should be free from any controlled substances which might impair the abilities of the student to perform his or her duties in such involvement. This is true whether the substances are prescribed or not.

In view of the foregoing, I affirm that I do not currently use any illegal drugs, nor do I abuse alcohol, or prescribed, or non-prescribed medications.

By this authorization, I do hereby release the previously designated doctors, medical personnel, or employees of Roanoke-Chowan Community College and the clinical agency from all liabilities arising from the physical examination and test results.

I have read and do freely understand the foregoing and have executed this agreement of my own free will and volition without any compulsion or coercion whatsoever.

SAMPLE

R-CCC ADN STUDENT HANDBOOK 2024-2025

21.8 Confidentiality Agreement (*Sample*)

Roanoke-Chowan Community College Associate Degree Nursing Program

In connection with my action as a nursing student at Roanoke-Chowan Community College, I agree to hold all information I may have access to about clients or former clients confidential and will not divulge any information to any unauthorized persons.

I understand that divulging confidential information to unauthorized persons will make me duly liable to civil action and is grounds for immediate dismissal from the nursing program.

21.9 Release of Personal Information (*Sample*)

ECU Health has adopted a new process for students to gain access to the patients' electronic health record (EHR). This change requires completion of a spreadsheet which will include personal student information: Roanoke-Chowan Community College student ID number and date of birth. This information is necessary for entrance into ECU Health's Peoplesoft system. A spreadsheet will need to be completed containing the requested information for each student. The sheet is sent directly to Corporate HR so that confidentiality is maintained. Because of the numbering system a different badge will be required for all other ECU Health facilities.

I grant permission for the Nursing Department of Roanoke-Chowan Community College to release my personal identifiable information including my date of birth and social security number for the purpose of meeting hospital requirements to access patient records.

Birthdate: ____ / ____ / ____

Last four digits of Social Security #: _____

R-CCC Student ID#: _____

Date: ____ / ____ / ____

Print Name: _____

Student's Signature: _____

R-CCC ADN STUDENT HANDBOOK 2024-2025

21.10 Performance Improvement Plan (Sample)

**Roanoke-Chowan Community College
Associate Degree Nursing Program**

Student Name: _____

Course Title: _____

Date: _____

Reason(s) for Performance Improvement Plan (PIP):

Strategies/Methods for Correction:

Recommended Time Frame PIP:

Student Comments:

SAMPLE

Faculty/Director Comments:

ADN Program Director Recommendation:

Signatures:

ADN Program Director

Date

Faculty

Date

Student

Date

Revised August 2008, June 17, 2009, May 12, 2010, August 2012, November 2012, May 2018

22.0 CHECKLIST FOR APPLYING TO NURSING PROGRAM

BEFORE applying to the ADN Program, you MUST:

- ✓ Apply to Roanoke-Chowan Community College.
- ✓ Students must complete ENG 002 Tier 2 and MAT 003 Tier 2 courses with a grade of “P”.
- ✓ Possess a cumulative grade point average (GPA) of 3.0 or better on all prior course work, excluding transitional/supplemental courses, ACA courses, and PE courses over the past three semesters.

Application Process:

- A. Complete an application for admission to Roanoke-Chowan Community College (R-CCC) online by visiting the R-CCC website at [Roanoke-Chowan Community College](#). Request and submit official transcripts from high school or Adult High School Diploma/GED certificate and all colleges/universities attended to Student Development Services, Roanoke-Chowan Community College.
- B. Grade point average requirement: Applicant must have a minimum grade point average of 3.0 or higher (see details above).
- C. Students must attend one of the scheduled Information Sessions. For more information, contact the ADN Program at (252)862-1289 or 1327.
- D. Complete the Associate Degree Nursing (ADN) Program Application and submit a copy by email, hand delivery, or postal mail postmarked on or before March 1. Mail to: *ATTN: Admissions, Roanoke-Chowan Community College, PO Box 1248, Ahoskie, NC 27910*. The application is available on the college’s website at [Nursing ADN](#).
- E. Verify listing as a Certified Nurse Aid with the NC Division of Health Service Regulation Registry.
- F. Submit evidence of cardiopulmonary resuscitation certification (CPR) at the BLS/Health Care Provider Level (American Heart Association).
- G. Submit a completed North Carolina Community College System (NCCCS) Health Examination Form, available online at [Nursing ADN](#) at time of application.
- H. Receive a conditional letter and permission to take Kaplan Entrance Exam. After confirmation of the qualifying 3.0 GPA by the Registrar’s Office, as well as submission of a complete packet, and having all required immunizations the applicant is then eligible to take the Kaplan Entrance Examination for the ADN Program.
- I. Applicants seeking admission must complete ALL the above minimum admission requirements. A complete packet includes the Nursing Program Application, Health Form, proof of NAI Registry, and CPR certification. Completion of the minimum admission requirements does not guarantee acceptance into the nursing program.

Criminal Background Check:

Prior to attending clinical, you must complete a criminal background check with drug screening. You will receive further instructions regarding this process once admitted to the nursing program. Please review your criminal status before applying to the ADN program.

R-CCC ADN STUDENT HANDBOOK 2024-2025

23.0 REFERENCES

Berman, A., & Snyder, S. (2016). *Kozier and Erb's Fundamentals of Nursing* (10th ed.). Upper Saddle River, NJ: Pearson Education Inc.

Ignatavicius, D., & Workman, M.L. (2018). *Medical-Surgical Nursing: Critical Thinking for Collaborative Care: Concepts, Process and Practices* (9th ed.). Philadelphia, PA: Elsevier Inc.

Institute of Medicine (IOM). (2016). *Institute of Medicine's Five Core Competencies*. Retrieved from: [Institute of Medicine Core Competencies for Health Professionals](#)

Knowles, M., Holton, E., & Swanson R. (2015). *The Adult Learner: The Definitive Classic in Adult Education and Human Resource Development* (8th ed.). Burlington, Ma: Elsevier.

National League for Nursing (NLN). (2012). *Outcome Competencies for Graduates of Practical/Vocational, Diploma, Baccalaureate, Master's Practice Doctorate, and Research*. Wolters Kluwer.

National League for Nursing (NLN). (2020). *Core Competencies for Nursing Education* Retrieved from: [NLN Competencies for Graduates of Nursing Programs](#)

North Carolina Board of Nursing. (2019). *Administrative Code 21. NCAC 36. 0224*. Raleigh, NC: North Carolina Board of Nursing

North Carolina Board of Nursing. (2019). *Administrative Code 21 NCAC 36 .0225*. Raleigh, NC: North Carolina Board of Nursing

Von Bertalanffy, L. (1969). *General System Theory: Foundations, Development, Applications*. New York, NY: G